



IL-2R α Polyclonal Antibody

Catalog No	BYab-13377
Isotype	IgG
Reactivity	Human;Rat;Mouse;
Applications	WB;IF;ELISA
Gene Name	IL2RA
Protein Name	Interleukin-2 receptor subunit alpha
Immunogen	The antiserum was produced against synthesized peptide derived from human IL-2R alpha/CD25. AA range:223-272
Specificity	IL-2R α Polyclonal Antibody detects endogenous levels of IL-2R α protein.
Formulation	Liquid in PBS containing 50% glycerol, 0.5% BSA and 0.02% sodium azide.
Source	Polyclonal, Rabbit,IgG
Purification	The antibody was affinity-purified from rabbit antiserum by affinity-chromatography using epitope-specific immunogen.
Dilution	Western Blot: 1/500 - 1/2000. Immunofluorescence: 1/200 - 1/1000. ELISA: 1/20000. Not yet tested in other applications.
Concentration	1 mg/ml
Purity	$\geq 90\%$
Storage Stability	-20°C/1 year
Synonyms	IL2RA; Interleukin-2 receptor subunit alpha; IL-2 receptor subunit alpha; IL-2-RA; IL-2R subunit alpha; IL2-RA; TAC antigen; p55; CD antigen CD25
Observed Band	55kD
Cell Pathway	Membrane; Single-pass type I membrane protein.
Tissue Specificity	Thymus,
Function	disease:Genetic variations in IL2RA are associated with susceptibility to insulin-dependent diabetes mellitus type 10 (IDDM10) [MIM:601942].,function:Receptor for interleukin-2.,online information:IL2RA mutation db,similarity:Contains 2 Sushi (CCP/SCR) domains.,subunit:Non-covalent dimer of an alpha and a beta chains. IL2R exists in 3 different forms: a high affinity dimer, an intermediate affinity monomer (beta chain), and a low affinity monomer (alpha chain). The high and intermediate affinity forms also associate with a gamma chain.,

Nanjing BYabscience technology Co.,Ltd



Background

The interleukin 2 (IL2) receptor alpha (IL2RA) and beta (IL2RB) chains, together with the common gamma chain (IL2RG), constitute the high-affinity IL2 receptor. Homodimeric alpha chains (IL2RA) result in low-affinity receptor, while homodimeric beta (IL2RB) chains produce a medium-affinity receptor. Normally an integral-membrane protein, soluble IL2RA has been isolated and determined to result from extracellular proteolysis. Alternately-spliced IL2RA mRNAs have been isolated, but the significance of each is presently unknown. Mutations in this gene are associated with interleukin 2 receptor alpha deficiency.[provided by RefSeq, Nov 2009],

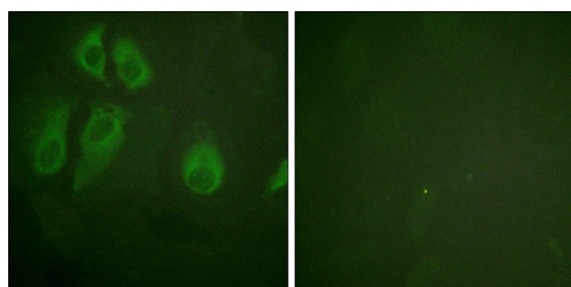
matters needing attention

Avoid repeated freezing and thawing!

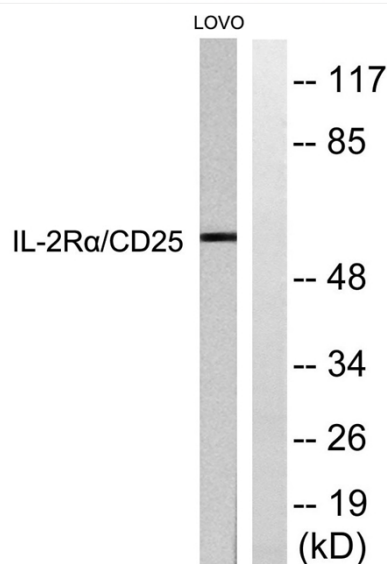
Usage suggestions

This product can be used in immunological reaction related experiments. For more information, please consult technical personnel.

Products Images



Immunofluorescence analysis of HeLa cells, using IL-2R alpha/CD25 Antibody. The picture on the right is blocked with the synthesized peptide.



Western blot analysis of lysates from LOVO cells, using IL-2R alpha/CD25 Antibody. The lane on the right is blocked with the synthesized peptide.