



# IL-1R9 Polyclonal Antibody

<b>Catalog No</b>	BYab-13375
<b>Isotype</b>	IgG
<b>Reactivity</b>	Human;Mouse
<b>Applications</b>	WB;ELISA
<b>Gene Name</b>	IL1RAPL2
<b>Protein Name</b>	X-linked interleukin-1 receptor accessory protein-like 2
<b>Immunogen</b>	The antiserum was produced against synthesized peptide derived from human IL1RAPL2. AA range:141-190
<b>Specificity</b>	IL-1R9 Polyclonal Antibody detects endogenous levels of IL-1R9 protein.
<b>Formulation</b>	Liquid in PBS containing 50% glycerol, 0.5% BSA and 0.02% sodium azide.
<b>Source</b>	Polyclonal, Rabbit,IgG
<b>Purification</b>	The antibody was affinity-purified from rabbit antiserum by affinity-chromatography using epitope-specific immunogen.
<b>Dilution</b>	Western Blot: 1/500 - 1/2000. ELISA: 1/20000. Not yet tested in other applications.
<b>Concentration</b>	1 mg/ml
<b>Purity</b>	≥90%
<b>Storage Stability</b>	-20°C/1 year
<b>Synonyms</b>	IL1RAPL2; IL1R9; X-linked interleukin-1 receptor accessory protein-like 2; IL-1 receptor accessory protein-like 2; IL-1-RAPL-2; IL-1RAPL-2; IL1RAPL-2; IL1RAPL-2-related protein; Interleukin-1 receptor 9; IL-1R-9; IL-1R9; Three immunoglobuli
<b>Observed Band</b>	79kD
<b>Cell Pathway</b>	Membrane; Single-pass type I membrane protein.
<b>Tissue Specificity</b>	Detected at low levels in fetal and adult brain, in particular in the frontal lobe, temporal lobe and cerebellum. Detected at very low levels in skin, liver, fetal ovary and in placenta.
<b>Function</b>	similarity:Belongs to the interleukin-1 receptor family.,similarity:Contains 1 TIR domain.,similarity:Contains 3 Ig-like C2-type (immunoglobulin-like) domains.,tissue specificity:Detected at low levels in fetal and adult brain, in particular in the frontal lobe, temporal lobe and cerebellum. Detected at very low levels in skin, liver, fetal ovary and in placenta.,

Nanjing BYabscience technology Co.,Ltd



**Background**

The protein encoded by this gene is a member of the interleukin 1 receptor family. This protein is similar to the interleukin 1 accessory proteins, and is most closely related to interleukin 1 receptor accessory protein-like 1 (IL1RAPL1). This gene and IL1RAPL1 are located at a region on chromosome X that is associated with X-linked non-syndromic mental retardation. [provided by RefSeq, Jul 2008],

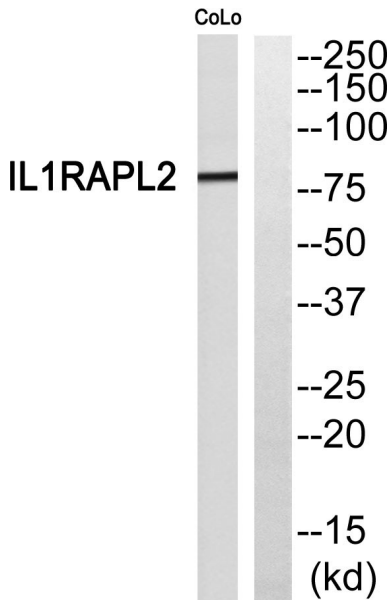
**matters needing attention**

Avoid repeated freezing and thawing!

**Usage suggestions**

This product can be used in immunological reaction related experiments. For more information, please consult technical personnel.

**Products Images**



Western blot analysis of IL1RAPL2 Antibody. The lane on the right is blocked with the IL1RAPL2 peptide.