



Histamine H1 Receptor Polyclonal Antibody

Catalog No	BYab-13359
Isotype	IgG
Reactivity	Human;Rat;Mouse;
Applications	WB;IF;ELISA
Gene Name	HRH1
Protein Name	Histamine H1 receptor
Immunogen	The antiserum was produced against synthesized peptide derived from human HRH1. AA range:141-190
Specificity	Histamine H1 Receptor Polyclonal Antibody detects endogenous levels of Histamine H1 Receptor protein.
Formulation	Liquid in PBS containing 50% glycerol, 0.5% BSA and 0.02% sodium azide.
Source	Polyclonal, Rabbit,IgG
Purification	The antibody was affinity-purified from rabbit antiserum by affinity-chromatography using epitope-specific immunogen.
Dilution	Western Blot: 1/500 - 1/2000. Immunofluorescence: 1/200 - 1/1000. ELISA: 1/10000. Not yet tested in other applications.
Concentration	1 mg/ml
Purity	≥90%
Storage Stability	-20°C/1 year
Synonyms	HRH1; Histamine H1 receptor; H1R; HH1R
Observed Band	60kD
Cell Pathway	Cell membrane ; Multi-pass membrane protein .
Tissue Specificity	Lens epithelium,Lung,
Function	function:In peripheral tissues, the H1 subclass of histamine receptors mediates the contraction of smooth muscles, increase in capillary permeability due to contraction of terminal venules, and catecholamine release from adrenal medulla, as well as mediating neurotransmission in the central nervous system.,PTM:Potential sites of phosphorylation in the third cytoplasmic loop may play an important role in regulating signal transduction through the receptor molecule.,similarity:Belongs to the G-protein coupled receptor 1 family.,
Background	Histamine is a ubiquitous messenger molecule released from mast cells, enterochromaffin-like cells, and neurons. Its various actions are mediated by histamine receptors H1, H2, H3 and H4. The protein encoded by this gene is an

Nanjing BYabscience technology Co.,Ltd



integral membrane protein and belongs to the G protein-coupled receptor superfamily. It mediates the contraction of smooth muscles, the increase in capillary permeability due to contraction of terminal venules, the release of catecholamine from adrenal medulla, and neurotransmission in the central nervous system. It has been associated with multiple processes, including memory and learning, circadian rhythm, and thermoregulation. It is also known to contribute to the pathophysiology of allergic diseases such as atopic dermatitis, asthma, anaphylaxis and allergic rhinitis. Multiple alternatively spliced variants, encoding the same protein, have been identified. [provided by Ref

matters needing attention

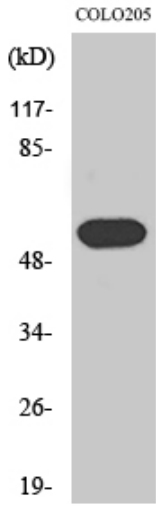
Avoid repeated freezing and thawing!

Usage suggestions

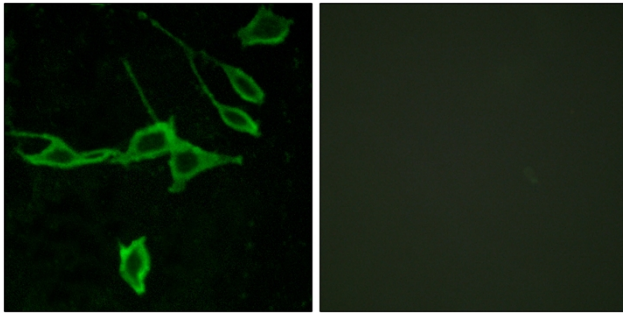
This product can be used in immunological reaction related experiments. For more information, please consult technical personnel.



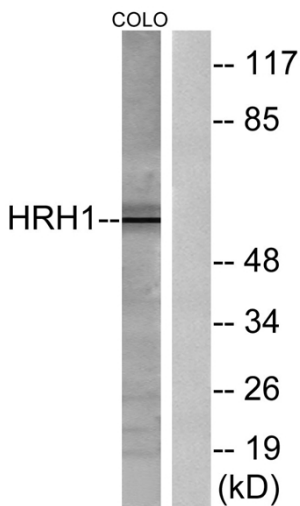
Products Images



Western Blot analysis of various cells using Histamine H1 Receptor Polyclonal Antibody diluted at 1:2000



Immunofluorescence analysis of LOVO cells, using HRH1 Antibody. The picture on the right is blocked with the synthesized peptide.



Western blot analysis of lysates from COLO205 cells, using HRH1 Antibody. The lane on the right is blocked with the synthesized peptide.