



GPRC5C Polyclonal Antibody

Catalog No	BYab-13356
Isotype	IgG
Reactivity	Human;Mouse;Rat;Monkey
Applications	WB;IF;ELISA
Gene Name	GPRC5C
Protein Name	G-protein coupled receptor family C group 5 member C
Immunogen	The antiserum was produced against synthesized peptide derived from human GPRC5C. AA range:51-100
Specificity	GPRC5C Polyclonal Antibody detects endogenous levels of GPRC5C protein.
Formulation	Liquid in PBS containing 50% glycerol, 0.5% BSA and 0.02% sodium azide.
Source	Polyclonal, Rabbit,IgG
Purification	The antibody was affinity-purified from rabbit antiserum by affinity-chromatography using epitope-specific immunogen.
Dilution	Western Blot: 1/500 - 1/2000. Immunofluorescence: 1/200 - 1/1000. ELISA: 1/5000. Not yet tested in other applications.
Concentration	1 mg/ml
Purity	≥90%
Storage Stability	-20°C/1 year
Synonyms	GPRC5C; RAIG3; PSEC0087; G-protein coupled receptor family C group 5 member C; Retinoic acid-induced gene 3 protein; RAIG-3
Observed Band	48kD
Cell Pathway	Cell membrane; Multi-pass membrane protein. Cytoplasmic vesicle membrane; Multi-pass membrane protein. Localized in the plasma membrane and perinuclear vesicles.
Tissue Specificity	Expression is highest in the periphery, particularly in the stomach, but also in the kidney, liver, pancreas, and prostate. In brain, levels of expression are generally lower than in the periphery, with the exception of cerebellum, spinal cord, and dorsal root ganglia (DRG).
Function	function:Unknown. This retinoic acid-inducible G-protein coupled receptor provide evidence for a possible interaction between retinoid and G-protein signaling pathways.,induction:By all-trans retinoic acid (ATRA).,PTM:Phosphorylated upon DNA damage, probably by ATM or ATR.,similarity:Belongs to the G-protein coupled receptor 3 family.,subcellular location:Localized in the plasma membrane and perinuclear vesicles.,tissue specificity:Expression is highest in the periphery, particularly in the stomach, but also in the kidney, liver, pancreas, and prostate. In

Nanjing BYabscience technology Co.,Ltd



brain, levels of expression are generally lower than in the periphery, with the exception of cerebellum, spinal cord, and dorsal root ganglia (DRG).,

Background

The protein encoded by this gene is a member of the type 3 G protein-coupled receptor family. Members of this superfamily are characterized by a signature 7-transmembrane domain motif. The specific function of this protein is unknown; however, this protein may mediate the cellular effects of retinoic acid on the G protein signal transduction cascade. Two transcript variants encoding different isoforms have been found for this gene. [provided by RefSeq, Jul 2008],

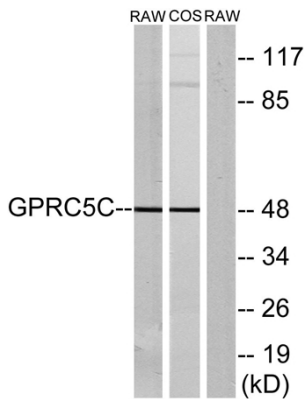
matters needing attention

Avoid repeated freezing and thawing!

Usage suggestions

This product can be used in immunological reaction related experiments. For more information, please consult technical personnel.

Products Images



Western blot analysis of lysates from RAW264.7 and COS7 cells, using GPRC5C Antibody. The lane on the right is blocked with the synthesized peptide.