



GPR92 Polyclonal Antibody

| | |
|---------------------------|---|
| Catalog No | BYab-13354 |
| Isotype | IgG |
| Reactivity | Human;Rat;Mouse; |
| Applications | WB;IHC;IF;ELISA |
| Gene Name | LPAR5 |
| Protein Name | Lysophosphatidic acid receptor 5 |
| Immunogen | The antiserum was produced against synthesized peptide derived from human GPR92. AA range:241-290 |
| Specificity | GPR92 Polyclonal Antibody detects endogenous levels of GPR92 protein. |
| Formulation | Liquid in PBS containing 50% glycerol, 0.5% BSA and 0.02% sodium azide. |
| Source | Polyclonal, Rabbit,IgG |
| Purification | The antibody was affinity-purified from rabbit antiserum by affinity-chromatography using epitope-specific immunogen. |
| Dilution | Western Blot: 1/500 - 1/2000. Immunohistochemistry: 1/100 - 1/300. Immunofluorescence: 1/200 - 1/1000. ELISA: 1/5000. Not yet tested in other applications. |
| Concentration | 1 mg/ml |
| Purity | ≥90% |
| Storage Stability | -20°C/1 year |
| Synonyms | LPAR5; GPR92; GPR93; Lysophosphatidic acid receptor 5; LPA receptor 5; LPA-5; G-protein coupled receptor 92; G-protein coupled receptor 93 |
| Observed Band | 40kD |
| Cell Pathway | Cell membrane; Multi-pass membrane protein. |
| Tissue Specificity | Not expressed in frontal cortex, basal forebrain, caudate putamen, thalamus, or hippocampus. |
| Function | function:Receptor for lysophosphatidic acid (LPA), a mediator of diverse cellular activities.,similarity:Belongs to the G-protein coupled receptor 1 family.,tissue specificity:Not expressed in frontal cortex, basal forebrain, caudate putamen, thalamus, or hippocampus., |
| Background | lysophosphatidic acid receptor 5(LPAR5) Homo sapiens This gene encodes a member of the rhodopsin class of G protein-coupled transmembrane receptors. This protein transmits extracellular signals from lysophosphatidic acid to cells through heterotrimeric G proteins and mediates numerous cellular processes. |

Nanjing BYabscience technology Co.,Ltd



Many G protein receptors serve as targets for pharmaceutical drugs. Transcript variants of this gene have been described.[provided by RefSeq, Dec 2008],

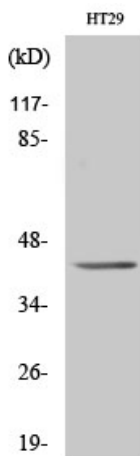
matters needing attention

Avoid repeated freezing and thawing!

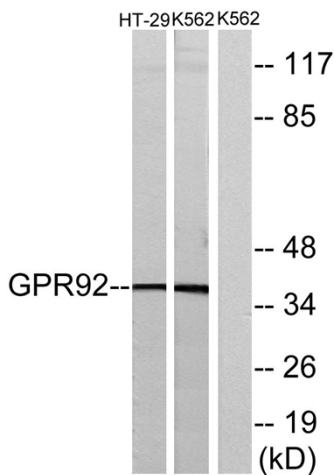
Usage suggestions

This product can be used in immunological reaction related experiments. For more information, please consult technical personnel.

Products Images



Western Blot analysis of various cells using GPR92 Polyclonal Antibody diluted at 1:500



Western blot analysis of lysates from HT-29 and K562 cells, using GPR92 Antibody. The lane on the right is blocked with the synthesized peptide.

Nanjing BYabscience technology Co.,Ltd