



# GPR91 Polyclonal Antibody

|                           |  |
|---------------------------|--|
| <b>Catalog No</b>         | BYab-13353   |
| <b>Isotype</b>            | IgG  |
| <b>Reactivity</b>         | Human;Mouse;Rat;Pig  |
| <b>Applications</b>       | WB;IF;ELISA  |
| <b>Gene Name</b>          | SUCNR1   |
| <b>Protein Name</b>       | Succinate receptor 1   |
| <b>Immunogen</b>          | The antiserum was produced against synthesized peptide derived from human SUCNR1. AA range:100-149   |
| <b>Specificity</b>        | GPR91 Polyclonal Antibody detects endogenous levels of GPR91 protein.  |
| <b>Formulation</b>        | Liquid in PBS containing 50% glycerol, 0.5% BSA and 0.02% sodium azide.  |
| <b>Source</b>             | Polyclonal, Rabbit,IgG   |
| <b>Purification</b>       | The antibody was affinity-purified from rabbit antiserum by affinity-chromatography using epitope-specific immunogen.  |
| <b>Dilution</b>           | Western Blot: 1/500 - 1/2000. Immunofluorescence: 1/200 - 1/1000. ELISA: 1/10000. Not yet tested in other applications.  |
| <b>Concentration</b>      | 1 mg/ml  |
| <b>Purity</b>             | ≥90%   |
| <b>Storage Stability</b>  | -20°C/1 year   |
| <b>Synonyms</b>           | SUCNR1; GPR91; Succinate receptor 1; G-protein coupled receptor 91; P2Y purinoceptor 1-like  |
| <b>Observed Band</b>      | 38kD   |
| <b>Cell Pathway</b>       | Cell membrane ; Multi-pass membrane protein .  |
| <b>Tissue Specificity</b> | Expressed specifically in kidney.  |
| <b>Function</b>           | function:Receptor for succinate.,similarity:Belongs to the G-protein coupled receptor 1 family.,tissue specificity:Expressed specifically in kidney.,  |
| <b>Background</b>         | This gene encodes a G-protein-coupled receptor for succinate, an intermediate molecule of the citric acid cycle. It is involved in the promotion of hematopoietic progenitor cell development, and it has a potential role in renovascular hypertension which has known correlations to renal failure, diabetes and atherosclerosis. [provided by RefSeq, Oct 2009], |

Nanjing BYabscience technology Co.,Ltd



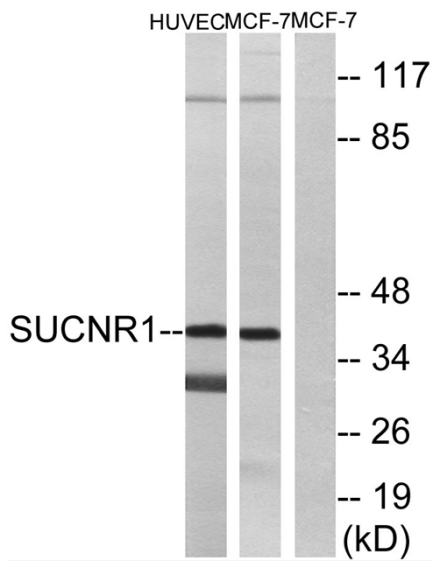
**matters needing attention**

Avoid repeated freezing and thawing!

**Usage suggestions**

This product can be used in immunological reaction related experiments. For more information, please consult technical personnel.

**Products Images**



Western blot analysis of lysates from HUVEC and MCF-7 cells, using SUCNR1 Antibody. The lane on the right is blocked with the synthesized peptide.