



# GPR87 Polyclonal Antibody

<b>Catalog No</b>	BYab-13352
<b>Isotype</b>	IgG
<b>Reactivity</b>	Human;Mouse
<b>Applications</b>	WB;IF;ELISA
<b>Gene Name</b>	GPR87
<b>Protein Name</b>	G-protein coupled receptor 87
<b>Immunogen</b>	The antiserum was produced against synthesized peptide derived from human GPR87. AA range:221-270
<b>Specificity</b>	GPR87 Polyclonal Antibody detects endogenous levels of GPR87 protein.
<b>Formulation</b>	Liquid in PBS containing 50% glycerol, 0.5% BSA and 0.02% sodium azide.
<b>Source</b>	Polyclonal, Rabbit,IgG
<b>Purification</b>	The antibody was affinity-purified from rabbit antiserum by affinity-chromatography using epitope-specific immunogen.
<b>Dilution</b>	Western Blot: 1/500 - 1/2000. Immunofluorescence: 1/200 - 1/1000. ELISA: 1/5000. Not yet tested in other applications.
<b>Concentration</b>	1 mg/ml
<b>Purity</b>	≥90%
<b>Storage Stability</b>	-20°C/1 year
<b>Synonyms</b>	GPR87; GPR95; FKSG78; G-protein coupled receptor 87; G-protein coupled receptor 95
<b>Observed Band</b>	40kD
<b>Cell Pathway</b>	Cell membrane ; Multi-pass membrane protein .
<b>Tissue Specificity</b>	Expressed in placenta and prostate. Weaker expression in thymus. Not expressed in thalamus, hippocampus, pons or cerebellum. Overexpressed in squamous cell carcinoma of the lung.
<b>Function</b>	function:Orphan receptor.,similarity:Belongs to the G-protein coupled receptor 1 family.,tissue specificity:Expressed in placenta and prostate. Weaker expression in thymus. Not expressed in thalamus, hippocampus, pons or cerebellum.,
<b>Background</b>	This gene encodes a G protein-coupled receptor and is located in a cluster of G protein-couple receptor genes on chromosome 3. The encoded protein has been shown to be overexpressed in lung squamous cell carcinoma (PMID:18057535) and regulated by p53 (PMID:19602589). [provided by RefSeq, Nov 2011],

Nanjing BYabscience technology Co.,Ltd



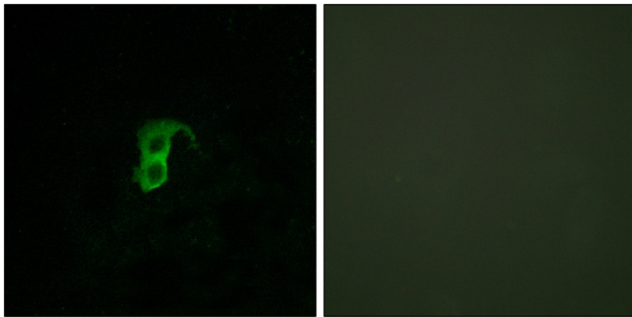
**matters needing attention**

Avoid repeated freezing and thawing!

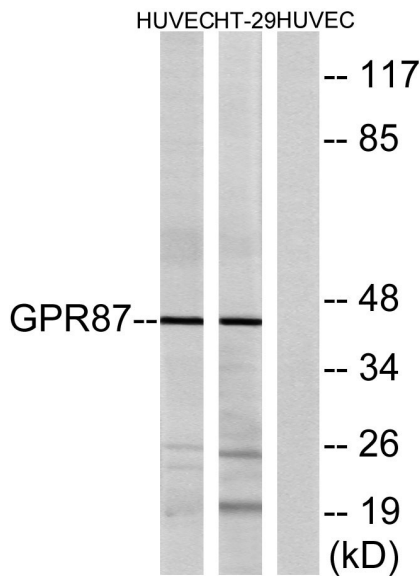
**Usage suggestions**

This product can be used in immunological reaction related experiments. For more information, please consult technical personnel.

## Products Images



Immunofluorescence analysis of HUVEC cells, using GPR87 Antibody. The picture on the right is blocked with the synthesized peptide.



Western blot analysis of lysates from HUVEC and HT-29 cells, using GPR87 Antibody. The lane on the right is blocked with the synthesized peptide.