



GPR75 Polyclonal Antibody

Catalog No	BYab-13348
Isotype	IgG
Reactivity	Human;Mouse
Applications	WB;IF;ELISA
Gene Name	GPR75
Protein Name	Probable G-protein coupled receptor 75
Immunogen	The antiserum was produced against synthesized peptide derived from human GPR75. AA range:381-430
Specificity	GPR75 Polyclonal Antibody detects endogenous levels of GPR75 protein.
Formulation	Liquid in PBS containing 50% glycerol, 0.5% BSA and 0.02% sodium azide.
Source	Polyclonal, Rabbit,IgG
Purification	The antibody was affinity-purified from rabbit antiserum by affinity-chromatography using epitope-specific immunogen.
Dilution	Western Blot: 1/500 - 1/2000. Immunofluorescence: 1/200 - 1/1000. ELISA: 1/5000. Not yet tested in other applications.
Concentration	1 mg/ml
Purity	≥90%
Storage Stability	-20°C/1 year
Synonyms	GPR75; Probable G-protein coupled receptor 75
Observed Band	59kD
Cell Pathway	Cell membrane; Multi-pass membrane protein .
Tissue Specificity	Expressed at high levels in brain and spinal cord and at detectable levels in retinal pigment epithelium. In situ hybridization of adult eye sections localized transcripts only to the perivascular cells, surrounding retinal arterioles, in the ganglion cell/nerve fiber layer. Also expressed by islet cells (at protein level).
Function	function:Orphan receptor.,similarity:Belongs to the G-protein coupled receptor 1 family.,tissue specificity:Expressed at high levels in brain and spinal cord and at detectable levels in retinal pigment epithelium. In situ hybridization of adult eye sections localized transcripts only to the perivascular cells, surrounding retinal arterioles, in the ganglion cell/nerve fiber layer.,
Background	GPR75 is a member of the G protein-coupled receptor family. GPRs are cell surface receptors that activate guanine-nucleotide binding proteins upon the binding of a ligand.[supplied by OMIM, Jul 2002],

Nanjing BYabscience technology Co.,Ltd



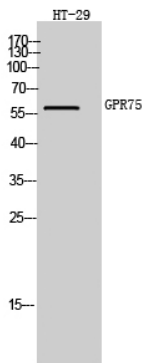
matters needing attention

Avoid repeated freezing and thawing!

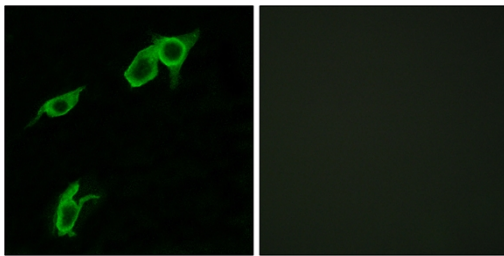
Usage suggestions

This product can be used in immunological reaction related experiments. For more information, please consult technical personnel.

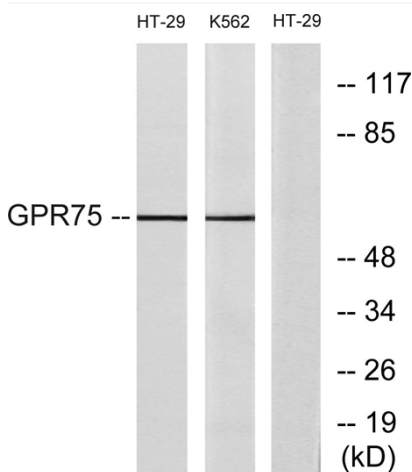
Products Images



Western Blot analysis of HT-29 cells using GPR75 Polyclonal Antibody



Immunofluorescence analysis of LOVO cells, using GPR75 Antibody. The picture on the right is blocked with the synthesized peptide.



Western blot analysis of lysates from HT-29 and K562 cells, using GPR75 Antibody. The lane on the right is blocked with the synthesized peptide.

Nanjing BYabscience technology Co.,Ltd