



GPR63 Polyclonal Antibody

Catalog No	BYab-13346
Isotype	IgG
Reactivity	Human;Mouse
Applications	IF;ELISA
Gene Name	GPR63
Protein Name	Probable G-protein coupled receptor 63
Immunogen	The antiserum was produced against synthesized peptide derived from human GPR63. AA range:370-419
Specificity	GPR63 Polyclonal Antibody detects endogenous levels of GPR63 protein.
Formulation	Liquid in PBS containing 50% glycerol, 0.5% BSA and 0.02% sodium azide.
Source	Polyclonal, Rabbit,IgG
Purification	The antibody was affinity-purified from rabbit antiserum by affinity-chromatography using epitope-specific immunogen.
Dilution	Immunofluorescence: 1/200 - 1/1000. ELISA: 1/20000. Not yet tested in other applications.
Concentration	1 mg/ml
Purity	≥90%
Storage Stability	-20°C/1 year
Synonyms	GPR63; PSP24B; Probable G-protein coupled receptor 63; PSP24-2; PSP24-beta
Observed Band	
Cell Pathway	Cell membrane; Multi-pass membrane protein.
Tissue Specificity	Expressed in brain; detected in the frontal cortex, with lower levels in the thalamus, caudate, hypothalamus and midbrain.
Function	function:Orphan receptor. May play a role in brain function.,similarity:Belongs to the G-protein coupled receptor 1 family.,tissue specificity:Expressed in brain; detected in the frontal cortex, with lower levels in the thalamus, caudate, hypothalamus and midbrain.,
Background	This gene encodes a G protein-coupled receptor. Multiple alternatively spliced variants, encoding the same protein, have been identified. [provided by RefSeq, Dec 2011],

Nanjing BYabscience technology Co.,Ltd



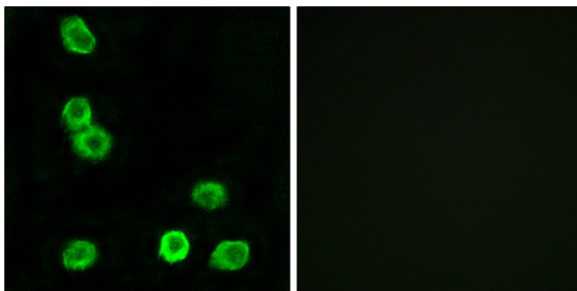
matters needing attention

Avoid repeated freezing and thawing!

Usage suggestions

This product can be used in immunological reaction related experiments. For more information, please consult technical personnel.

Products Images



Immunofluorescence analysis of MCF7 cells, using GPR63 Antibody. The picture on the right is blocked with the synthesized peptide.