



GPR42 Polyclonal Antibody

Catalog No	BYab-13339
Isotype	IgG
Reactivity	Human;Rat;Mouse;
Applications	IF;ELISA
Gene Name	GPR42
Protein Name	G-protein coupled receptor 42
Immunogen	The antiserum was produced against synthesized peptide derived from human GPR42. AA range:12-61
Specificity	GPR42 Polyclonal Antibody detects endogenous levels of GPR42 protein.
Formulation	Liquid in PBS containing 50% glycerol, 0.5% BSA and 0.02% sodium azide.
Source	Polyclonal, Rabbit,IgG
Purification	The antibody was affinity-purified from rabbit antiserum by affinity-chromatography using epitope-specific immunogen.
Dilution	Immunofluorescence: 1/200 - 1/1000. ELISA: 1/20000. Not yet tested in other applications.
Concentration	1 mg/ml
Purity	≥90%
Storage Stability	-20°C/1 year
Synonyms	GPR42; GPR42P; G-protein coupled receptor 42
Observed Band	
Cell Pathway	Cell membrane ; Multi-pass membrane protein .
Tissue Specificity	
Function	
Background	GPR42, also named as GPR42P, FFAR1L and GPR41L, belongs to the G-protein coupled receptor 1 family. GPR42 appears to have arisen by tandem duplication of FFAR3 and have lost the ability to activate G-protein family in response to carboxylate ligands primarily due to an amino acid change at position 174. It is an orphan receptor.
matters needing attention	Avoid repeated freezing and thawing!

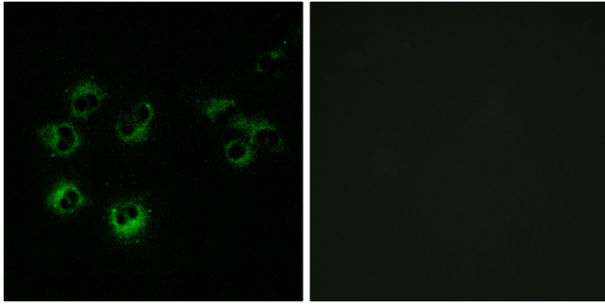
Nanjing BYabscience technology Co.,Ltd



Usage suggestions

This product can be used in immunological reaction related experiments. For more information, please consult technical personnel.

Products Images



Immunofluorescence analysis of MCF-7 cells, using GPR42 Antibody. The picture on the right is blocked with the synthesized peptide.