



GPR38 Polyclonal Antibody

Catalog No	BYab-13336
Isotype	IgG
Reactivity	Human;Rat;Mouse;
Applications	WB;ELISA
Gene Name	MLNR
Protein Name	Motilin receptor
Immunogen	Synthesized peptide derived from the C-terminal region of human GPR38.
Specificity	GPR38 Polyclonal Antibody detects endogenous levels of GPR38 protein.
Formulation	Liquid in PBS containing 50% glycerol, 0.5% BSA and 0.02% sodium azide.
Source	Polyclonal, Rabbit,IgG
Purification	The antibody was affinity-purified from rabbit antiserum by affinity-chromatography using epitope-specific immunogen.
Dilution	Western Blot: 1/500 - 1/2000. ELISA: 1/20000. Not yet tested in other applications.
Concentration	1 mg/ml
Purity	≥90%
Storage Stability	-20°C/1 year
Synonyms	MLNR; GPR38; MTLR; MTLR1; Motilin receptor; G-protein coupled receptor 38
Observed Band	45kD
Cell Pathway	Cell membrane; Multi-pass membrane protein.
Tissue Specificity	Expressed only in thyroid, stomach, and bone marrow.
Function	function:Receptor for motilin.,similarity:Belongs to the G-protein coupled receptor 1 family.,tissue specificity:Expressed only in thyroid, stomach, and bone marrow.,
Background	Motilin is a 22 amino acid peptide hormone expressed throughout the gastrointestinal (GI) tract. The protein encoded by this gene is a motilin receptor which is a member of the G-protein coupled receptor 1 family. This member is a multi-pass transmembrane protein, and is an important therapeutic target for the treatment of hypomotility disorders. [provided by RefSeq, Aug 2011],
matters needing attention	Avoid repeated freezing and thawing!

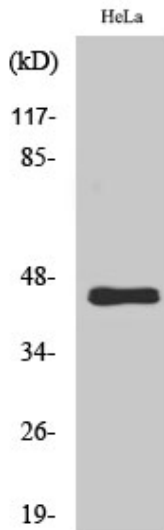
Nanjing BYabscience technology Co.,Ltd



Usage suggestions

This product can be used in immunological reaction related experiments. For more information, please consult technical personnel.

Products Images



Western Blot analysis of various cells using GPR38 Polyclonal Antibody