



GPR31 Polyclonal Antibody

Catalog No	BYab-13330
Isotype	IgG
Reactivity	Human;Rat;Mouse;
Applications	WB;ELISA
Gene Name	GPR31
Protein Name	12-(S)-hydroxy-5,8,10,14-eicosatetraenoic acid receptor
Immunogen	The antiserum was produced against synthesized peptide derived from human GPR31. AA range:181-230
Specificity	GPR31 Polyclonal Antibody detects endogenous levels of GPR31 protein.
Formulation	Liquid in PBS containing 50% glycerol, 0.5% BSA and 0.02% sodium azide.
Source	Polyclonal, Rabbit,IgG
Purification	The antibody was affinity-purified from rabbit antiserum by affinity-chromatography using epitope-specific immunogen.
Dilution	Western Blot: 1/500 - 1/2000. ELISA: 1/5000. Not yet tested in other applications.
Concentration	1 mg/ml
Purity	≥90%
Storage Stability	-20°C/1 year
Synonyms	GPR31; 12-(S)-hydroxy-5; 8,10,14-eicosatetraenoic acid receptor; 12-(S)-HETE receptor; 12-HETER; G-protein coupled receptor 31
Observed Band	33kD
Cell Pathway	Cell membrane ; Multi-pass membrane protein .
Tissue Specificity	G-protein coupled receptors,Placenta,
Function	function:Orphan receptor.,similarity:Belongs to the G-protein coupled receptor 1 family.,
Background	function:Orphan receptor.,similarity:Belongs to the G-protein coupled receptor 1 family.,
matters needing attention	Avoid repeated freezing and thawing!

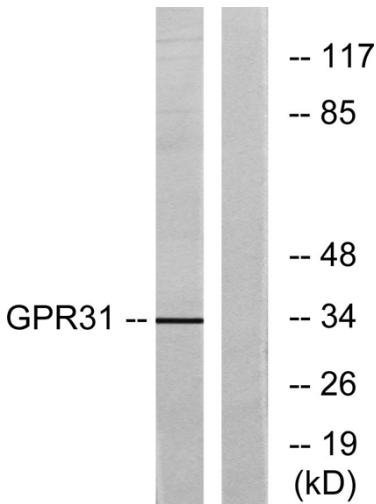
Nanjing BYabscience technology Co.,Ltd



Usage suggestions

This product can be used in immunological reaction related experiments. For more information, please consult technical personnel.

Products Images



Western blot analysis of lysates from COLO cells, using GPR31 Antibody. The lane on the right is blocked with the synthesized peptide.