



GPR22 Polyclonal Antibody

Catalog No	BYab-13327
Isotype	IgG
Reactivity	Human;Mouse
Applications	IF;ELISA
Gene Name	GPR22
Protein Name	Probable G-protein coupled receptor 22
Immunogen	The antiserum was produced against synthesized peptide derived from human GPR22. AA range:271-320
Specificity	GPR22 Polyclonal Antibody detects endogenous levels of GPR22 protein.
Formulation	Liquid in PBS containing 50% glycerol, 0.5% BSA and 0.02% sodium azide.
Source	Polyclonal, Rabbit,IgG
Purification	The antibody was affinity-purified from rabbit antiserum by affinity-chromatography using epitope-specific immunogen.
Dilution	Immunofluorescence: 1/200 - 1/1000. ELISA: 1/5000. Not yet tested in other applications.
Concentration	1 mg/ml
Purity	≥90%
Storage Stability	-20°C/1 year
Synonyms	GPR22; Probable G-protein coupled receptor 22
Observed Band	
Cell Pathway	Cell membrane ; Multi-pass membrane protein .
Tissue Specificity	High expression in adult and fetal heart tissue (PubMed:18539757). Expressed in the brain, with enrichment in the accumbens, amygdala, cerebellum, cortex, and hippocampus regions (PubMed:9073069, PubMed:18539757).
Function	function:Orphan receptor.,similarity:Belongs to the G-protein coupled receptor 1 family.,tissue specificity:In the brain regions frontal cortex, caudate, putamen and thalamus; not in pons, hypothalamus and hippocampus.,
Background	This gene is a member of the G-protein coupled receptor 1 family and encodes a multi-pass membrane protein. [provided by RefSeq, Jul 2008],
matters needing attention	Avoid repeated freezing and thawing!

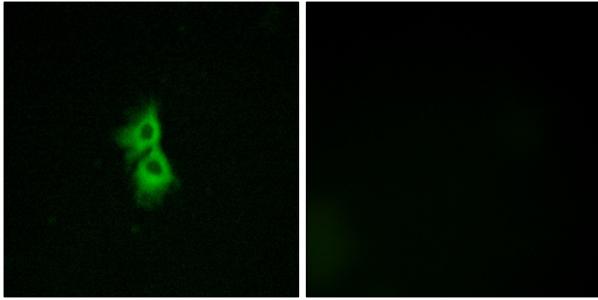
Nanjing BYabscience technology Co.,Ltd



Usage suggestions

This product can be used in immunological reaction related experiments. For more information, please consult technical personnel.

Products Images



Immunofluorescence analysis of MCF7 cells, using GPR22 Antibody. The picture on the right is blocked with the synthesized peptide.