



GPR20 Polyclonal Antibody

Catalog No	BYab-13326
Isotype	IgG
Reactivity	Human;Rat;Mouse;
Applications	WB;IHC;IF;ELISA
Gene Name	GPR20
Protein Name	G-protein coupled receptor 20
Immunogen	The antiserum was produced against synthesized peptide derived from human GPR20. AA range:291-340
Specificity	GPR20 Polyclonal Antibody detects endogenous levels of GPR20 protein.
Formulation	Liquid in PBS containing 50% glycerol, 0.5% BSA and 0.02% sodium azide.
Source	Polyclonal, Rabbit,IgG
Purification	The antibody was affinity-purified from rabbit antiserum by affinity-chromatography using epitope-specific immunogen.
Dilution	Western Blot: 1/500 - 1/2000. Immunohistochemistry: 1/100 - 1/300. Immunofluorescence: 1/200 - 1/1000. ELISA: 1/5000. Not yet tested in other applications.
Concentration	1 mg/ml
Purity	≥90%
Storage Stability	-20°C/1 year
Synonyms	GPR20; G-protein coupled receptor 20
Observed Band	42kD
Cell Pathway	Cell membrane ; Multi-pass membrane protein .
Tissue Specificity	Ubiquitous with highest levels in intestinal tissues. In the brain detected in thalamus, putamen, and caudate, but not in frontal cortex, pons and hypothalamus.
Function	function:Orphan receptor.,similarity:Belongs to the G-protein coupled receptor 1 family.,tissue specificity:Liver and the brain regions thalamus, putamen, and caudate, but not in frontal cortex, pons and hypothalamus.,
Background	function:Orphan receptor.,similarity:Belongs to the G-protein coupled receptor 1 family.,tissue specificity:Liver and the brain regions thalamus, putamen, and caudate, but not in frontal cortex, pons and hypothalamus.,

Nanjing BYabscience technology Co.,Ltd



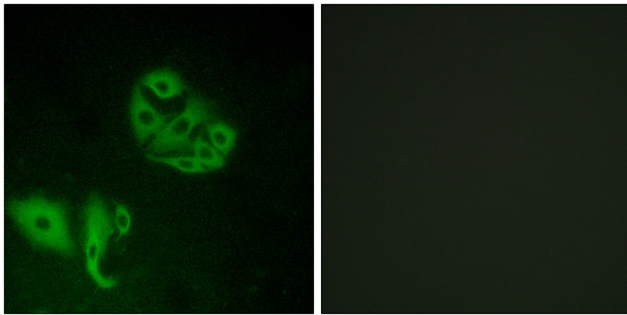
matters needing attention

Avoid repeated freezing and thawing!

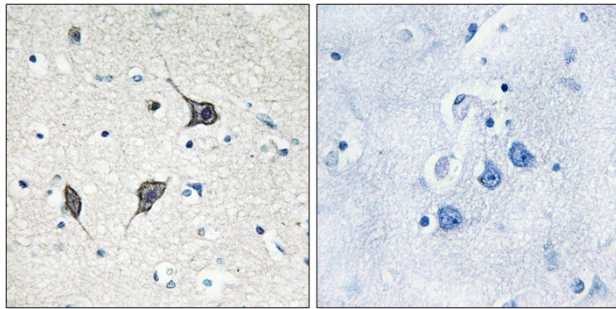
Usage suggestions

This product can be used in immunological reaction related experiments. For more information, please consult technical personnel.

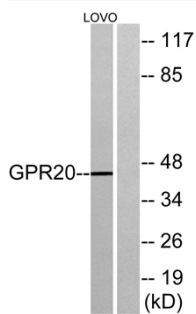
Products Images



Immunofluorescence analysis of A549 cells, using GPR20 Antibody. The picture on the right is blocked with the synthesized peptide.



Immunohistochemistry analysis of paraffin-embedded human brain tissue, using GPR20 Antibody. The picture on the right is blocked with the synthesized peptide.



Western blot analysis of lysates from LOVO cells, using GPR20 Antibody. The lane on the right is blocked with the synthesized peptide.

Nanjing BYabscience technology Co.,Ltd