



GPR180 Polyclonal Antibody

Catalog No	BYab-13324
Isotype	IgG
Reactivity	Human;Mouse
Applications	WB;IHC;IF;ELISA
Gene Name	GPR180
Protein Name	Integral membrane protein GPR180
Immunogen	The antiserum was produced against synthesized peptide derived from human GPR180. AA range:241-290
Specificity	GPR180 Polyclonal Antibody detects endogenous levels of GPR180 protein.
Formulation	Liquid in PBS containing 50% glycerol, 0.5% BSA and 0.02% sodium azide.
Source	Polyclonal, Rabbit,IgG
Purification	The antibody was affinity-purified from rabbit antiserum by affinity-chromatography using epitope-specific immunogen.
Dilution	Western Blot: 1/500 - 1/2000. Immunohistochemistry: 1/100 - 1/300. Immunofluorescence: 1/200 - 1/1000. ELISA: 1/10000. Not yet tested in other applications.
Concentration	1 mg/ml
Purity	≥90%
Storage Stability	-20°C/1 year
Synonyms	GPR180; ITR; Integral membrane protein GPR180; Intimal thickness-related receptor
Observed Band	50kD
Cell Pathway	Membrane ; Multi-pass membrane protein .
Tissue Specificity	Cerebellum,Cervix,Pancreas,
Function	
Background	This gene encodes a protein that is a member of the G protein-coupled receptor superfamily. This protein is produced predominantly in vascular smooth muscle cells and may play an important role in the regulation of vascular remodeling. [provided by RefSeq, Jul 2008],

Nanjing BYabscience technology Co.,Ltd



matters needing attention

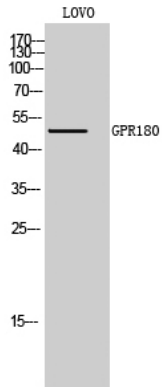
Avoid repeated freezing and thawing!

Usage suggestions

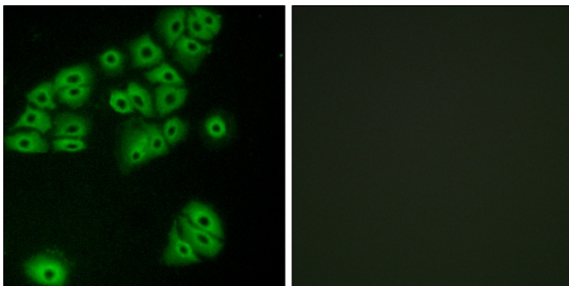
This product can be used in immunological reaction related experiments. For more information, please consult technical personnel.



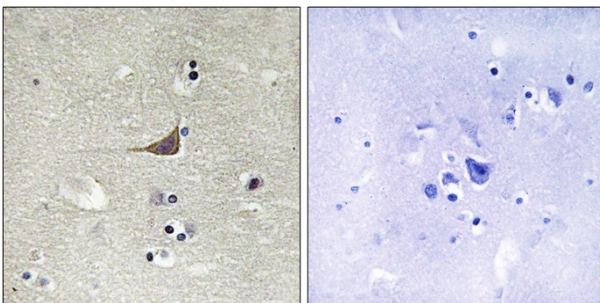
Products Images



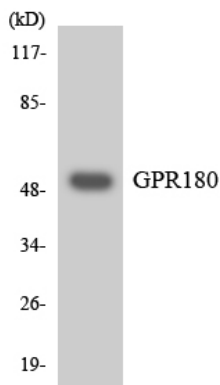
Western Blot analysis of LOVO cells using GPR180 Polyclonal Antibody



Immunofluorescence analysis of A549 cells, using GPR180 Antibody. The picture on the right is blocked with the synthesized peptide.



Immunohistochemistry analysis of paraffin-embedded human brain tissue, using GPR180 Antibody. The picture on the right is blocked with the synthesized peptide.



Western blot analysis of the lysates from Jurkat cells using GPR180 antibody.