



GPR18 Polyclonal Antibody

Catalog No	BYab-13323
Isotype	IgG
Reactivity	Human;Mouse;Rat
Applications	WB;IHC;IF;ELISA
Gene Name	GPR18
Protein Name	N-arachidonyl glycine receptor
Immunogen	The antiserum was produced against synthesized peptide derived from human GPR18. AA range:191-240
Specificity	GPR18 Polyclonal Antibody detects endogenous levels of GPR18 protein.
Formulation	Liquid in PBS containing 50% glycerol, 0.5% BSA and 0.02% sodium azide.
Source	Polyclonal, Rabbit,IgG
Purification	The antibody was affinity-purified from rabbit antiserum by affinity-chromatography using epitope-specific immunogen.
Dilution	Western Blot: 1/500 - 1/2000. Immunohistochemistry: 1/100 - 1/300. Immunofluorescence: 1/200 - 1/1000. ELISA: 1/5000. Not yet tested in other applications.
Concentration	1 mg/ml
Purity	≥90%
Storage Stability	-20°C/1 year
Synonyms	GPR18; GPCRW; N-arachidonyl glycine receptor; NAGly receptor; G-protein coupled receptor 18
Observed Band	34kD
Cell Pathway	Cell membrane ; Multi-pass membrane protein . Cytoplasmic vesicle membrane .
Tissue Specificity	Expressed in midpiece of spermatozoon (at protein level) (PubMed:27572937). Most abundant in testis and spleen (PubMed:16844083). Highly expressed in CD4 and CD8-positive T-cells as well as CD19-positive B-cells (PubMed:16844083).
Function	function:Receptor for N-arachidonyl glycine. The activity of this receptor is mediated by G proteins which inhibit adenylyl cyclase. May contribute to regulation of the immune system.,similarity:Belongs to the G-protein coupled receptor 1 family.,tissue specificity:Most abundant in testis and spleen. Highly expressed in CD4 and CD8-positive T-cells as well as CD19-positive B-cells.,

Nanjing BYabscience technology Co.,Ltd



Background

function:Receptor for N-arachidonyl glycine. The activity of this receptor is mediated by G proteins which inhibit adenylyl cyclase. May contribute to regulation of the immune system.,similarity:Belongs to the G-protein coupled receptor 1 family.,tissue specificity:Most abundant in testis and spleen. Highly expressed in CD4 and CD8-positive T-cells as well as CD19-positive B-cells.,

matters needing attention

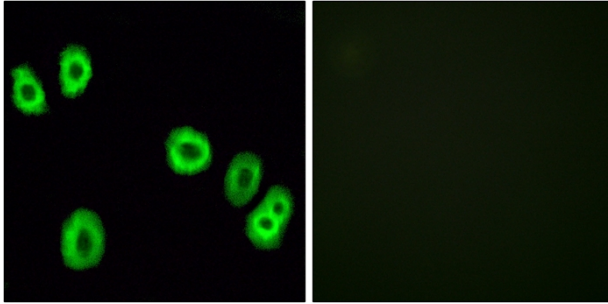
Avoid repeated freezing and thawing!

Usage suggestions

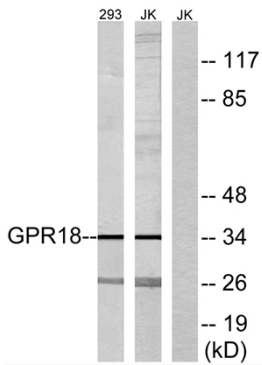
This product can be used in immunological reaction related experiments. For more information, please consult technical personnel.



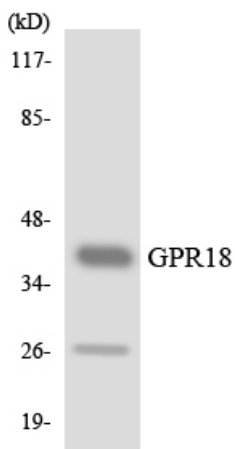
Products Images



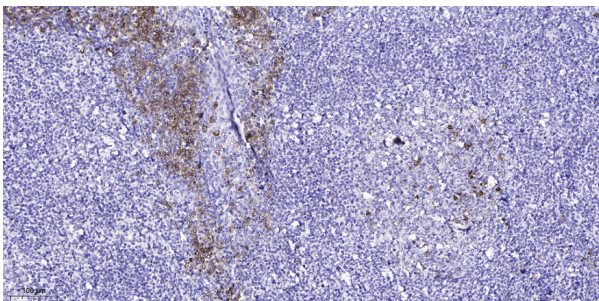
Immunofluorescence analysis of HUVEC cells, using GPR18 Antibody. The picture on the right is blocked with the synthesized peptide.



Western blot analysis of lysates from 293 and Jurkat cells, using GPR18 Antibody. The lane on the right is blocked with the synthesized peptide.



Western blot analysis of the lysates from HUVEC cells using GPR18 antibody.



Immunohistochemical analysis of paraffin-embedded human tonsil. 1, Antibody was diluted at 1:200(4° overnight). 2, Tris-EDTA,pH9.0 was used for antigen retrieval. 3,Secondary antibody was diluted at 1:200(room temperature, 45min).