



GPR173 Polyclonal Antibody

Catalog No	BYab-13319
Isotype	IgG
Reactivity	Human;Mouse;Rat
Applications	WB;IF;ELISA
Gene Name	GPR173
Protein Name	Probable G-protein coupled receptor 173
Immunogen	The antiserum was produced against synthesized peptide derived from human GPR173. AA range:251-300
Specificity	GPR173 Polyclonal Antibody detects endogenous levels of GPR173 protein.
Formulation	Liquid in PBS containing 50% glycerol, 0.5% BSA and 0.02% sodium azide.
Source	Polyclonal, Rabbit,IgG
Purification	The antibody was affinity-purified from rabbit antiserum by affinity-chromatography using epitope-specific immunogen.
Dilution	Western Blot: 1/500 - 1/2000. Immunofluorescence: 1/200 - 1/1000. ELISA: 1/10000. Not yet tested in other applications.
Concentration	1 mg/ml
Purity	≥90%
Storage Stability	-20°C/1 year
Synonyms	GPR173; SREB3; Probable G-protein coupled receptor 173; Super conserved receptor expressed in brain 3
Observed Band	47kD
Cell Pathway	Cell membrane ; Multi-pass membrane protein .
Tissue Specificity	Expressed in the ovary, specifically in granulosa cells of follicles that have passed the primary stage and in oocytes (at protein level) (PubMed:30933929). Expressed at high levels in brain. Lower levels in small intestine. In brain regions, detected in all regions tested. Highest levels in the cerebellum and cerebral cortex.
Function	function:Orphan receptor.,similarity:Belongs to the G-protein coupled receptor 1 family.,tissue specificity:Expressed at high levels in brain and ovary. Lower levels in small intestine. In brain regions, detected in all regions tested. Highest levels in the cerebellum and cerebral cortex.,
Background	This gene encodes a member of the G-protein coupled receptor 1 family. This protein contains 7 transmembrane domains and conserved cysteine residues.

Nanjing BYabscience technology Co.,Ltd



[provided by RefSeq, Nov 2009],

matters needing attention

Avoid repeated freezing and thawing!

Usage suggestions

This product can be used in immunological reaction related experiments. For more information, please consult technical personnel.

Nanjing BYabscience technology Co.,Ltd

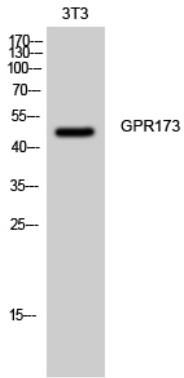
网址: www.njbybio.com

官方热线: 025-5229-8998

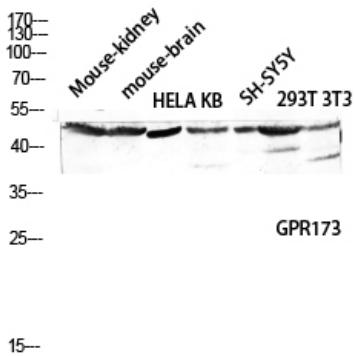
监督电话: 15950492658



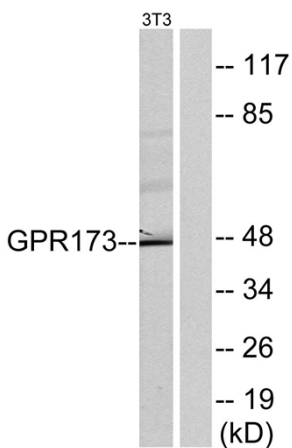
Products Images



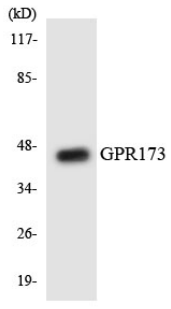
Western Blot analysis of 3T3 cells using GPR173 Polyclonal Antibody diluted at 1:2000



Western blot analysis of Mouse-kidney mouse-brain HELA KB SH-SY5Y 293T 3T3 lysis using GPR173 antibody. Antibody was diluted at 1:2000



Western blot analysis of lysates from NIH/3T3 cells, using GPR173 Antibody. The lane on the right is blocked with the synthesized peptide.



Western blot analysis of the lysates from COLO205 cells using GPR173 antibody.