



# GPR171 Polyclonal Antibody

<b>Catalog No</b>	BYab-13316
<b>Isotype</b>	IgG
<b>Reactivity</b>	Human;Rat;Mouse;
<b>Applications</b>	WB;IF;ELISA
<b>Gene Name</b>	GPR171
<b>Protein Name</b>	Probable G-protein coupled receptor 171
<b>Immunogen</b>	The antiserum was produced against synthesized peptide derived from human GPR171. AA range:181-230
<b>Specificity</b>	GPR171 Polyclonal Antibody detects endogenous levels of GPR171 protein.
<b>Formulation</b>	Liquid in PBS containing 50% glycerol, 0.5% BSA and 0.02% sodium azide.
<b>Source</b>	Polyclonal, Rabbit,IgG
<b>Purification</b>	The antibody was affinity-purified from rabbit antiserum by affinity-chromatography using epitope-specific immunogen.
<b>Dilution</b>	Western Blot: 1/500 - 1/2000. Immunofluorescence: 1/200 - 1/1000. ELISA: 1/10000. Not yet tested in other applications.
<b>Concentration</b>	1 mg/ml
<b>Purity</b>	≥90%
<b>Storage Stability</b>	-20°C/1 year
<b>Synonyms</b>	GPR171; H963; Probable G-protein coupled receptor 171; G-protein coupled receptor H963
<b>Observed Band</b>	36kD
<b>Cell Pathway</b>	Cell membrane ; Multi-pass membrane protein . Colocalized with GPR83 in the paraventricular nucleus. .
<b>Tissue Specificity</b>	Expressed in both T-cell subsets and natural killer cells, while it is undetectable in B cells or CD14(+) monocytes. Expressed in peripheral blood mononuclear cells (PBMC) and Jurkat cells (at protein level).
<b>Function</b>	function:Orphan receptor.,similarity:Belongs to the G-protein coupled receptor 1 family.,
<b>Background</b>	function:Orphan receptor.,similarity:Belongs to the G-protein coupled receptor 1 family.,
<b>matters needing attention</b>	Avoid repeated freezing and thawing!

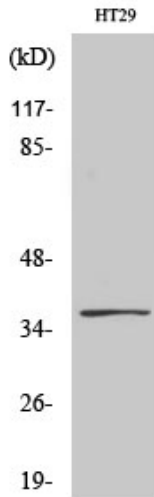
Nanjing BYabscience technology Co.,Ltd



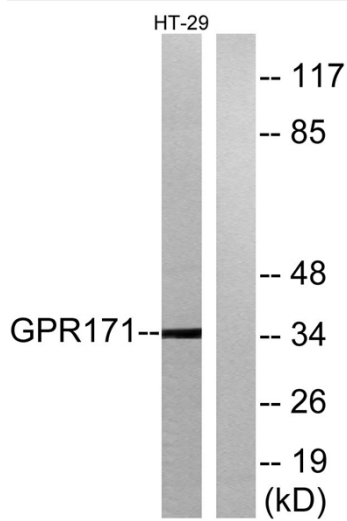
### Usage suggestions

This product can be used in immunological reaction related experiments. For more information, please consult technical personnel.

## Products Images



Western Blot analysis of various cells using GPR171 Polyclonal Antibody



Western blot analysis of lysates from HT-29 cells, using GPR171 Antibody. The lane on the right is blocked with the synthesized peptide.