



GPR17 Polyclonal Antibody

Catalog No	BYab-13315
Isotype	IgG
Reactivity	Human;Mouse;Rat
Applications	WB;IF;ELISA
Gene Name	GPR17
Protein Name	Uracil nucleotide/cysteinyl leukotriene receptor
Immunogen	The antiserum was produced against synthesized peptide derived from human GPR17. AA range:196-245
Specificity	GPR17 Polyclonal Antibody detects endogenous levels of GPR17 protein.
Formulation	Liquid in PBS containing 50% glycerol, 0.5% BSA and 0.02% sodium azide.
Source	Polyclonal, Rabbit,IgG
Purification	The antibody was affinity-purified from rabbit antiserum by affinity-chromatography using epitope-specific immunogen.
Dilution	Western Blot: 1/500 - 1/2000. Immunofluorescence: 1/200 - 1/1000. ELISA: 1/5000. Not yet tested in other applications.
Concentration	1 mg/ml
Purity	≥90%
Storage Stability	-20°C/1 year
Synonyms	GPR17; Uracil nucleotide/cysteinyl leukotriene receptor; UDP/CysLT receptor; G-protein coupled receptor 17; P2Y-like receptor; R12
Observed Band	59kD
Cell Pathway	Cell membrane; Multi-pass membrane protein.
Tissue Specificity	Expressed in brain, kidney, heart and umbilical vein endothelial cells. Highest level in brain.
Function	function: Dual specificity receptor for uracil nucleotides and cysteinyl leukotrienes (CysLTs). Signals through G(i) and inhibition of adenylyl cyclase. May mediate brain damage by nucleotides and CysLTs following ischemia.,similarity: Belongs to the G-protein coupled receptor 1 family.,tissue specificity: Expressed in brain, kidney, heart and umbilical vein endothelial cells. Highest level in brain.,
Background	function: Dual specificity receptor for uracil nucleotides and cysteinyl leukotrienes (CysLTs). Signals through G(i) and inhibition of adenylyl cyclase. May mediate brain damage by nucleotides and CysLTs following ischemia.,similarity: Belongs to the G-protein coupled receptor 1 family.,tissue specificity: Expressed in brain,

Nanjing BYabscience technology Co.,Ltd



kidney, heart and umbilical vein endothelial cells. Highest level in brain.,

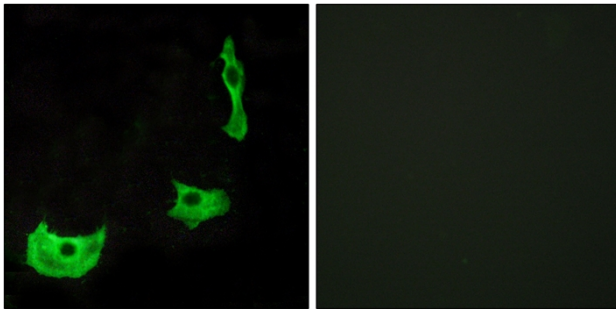
matters needing attention

Avoid repeated freezing and thawing!

Usage suggestions

This product can be used in immunological reaction related experiments. For more information, please consult technical personnel.

Products Images



Immunofluorescence analysis of HeLa cells, using GPR17 Antibody. The picture on the right is blocked with the synthesized peptide.