



# GPR156 Polyclonal Antibody

<b>Catalog No</b>	BYab-13311
<b>Isotype</b>	IgG
<b>Reactivity</b>	Human;Rat;Mouse;
<b>Applications</b>	WB;IF;ELISA
<b>Gene Name</b>	GPR156
<b>Protein Name</b>	Probable G-protein coupled receptor 156
<b>Immunogen</b>	The antiserum was produced against synthesized peptide derived from human GPR156. AA range:501-550
<b>Specificity</b>	GPR156 Polyclonal Antibody detects endogenous levels of GPR156 protein.
<b>Formulation</b>	Liquid in PBS containing 50% glycerol, 0.5% BSA and 0.02% sodium azide.
<b>Source</b>	Polyclonal, Rabbit,IgG
<b>Purification</b>	The antibody was affinity-purified from rabbit antiserum by affinity-chromatography using epitope-specific immunogen.
<b>Dilution</b>	Western Blot: 1/500 - 1/2000. Immunofluorescence: 1/200 - 1/1000. ELISA: 1/5000. Not yet tested in other applications.
<b>Concentration</b>	1 mg/ml
<b>Purity</b>	≥90%
<b>Storage Stability</b>	-20°C/1 year
<b>Synonyms</b>	GPR156; GABABL; PGR28; Probable G-protein coupled receptor 156; G-protein coupled receptor PGR28; GABAB-related G-protein coupled receptor
<b>Observed Band</b>	89kD
<b>Cell Pathway</b>	Cell membrane; Multi-pass membrane protein.
<b>Tissue Specificity</b>	Ubiquitous expression both in the CNS and in peripheral tissues. Very high expression in fetal brain and testis relative to expression in other tissues.
<b>Function</b>	function:Orphan receptor.,similarity:Belongs to the G-protein coupled receptor 3 family. GABA-B receptor subfamily.,tissue specificity:Ubiquitous expression both in the CNS and in peripheral tissues. Very high expression in fetal brain and testis relative to expression in other tissues.,
<b>Background</b>	G protein-coupled receptors (GPCRs) are a large superfamily of cell surface receptors characterized by 7 helical transmembrane domains, together with N-terminal extracellular and C-terminal intracellular domains.[supplied by OMIM, Mar 2008],

Nanjing BYabscience technology Co.,Ltd



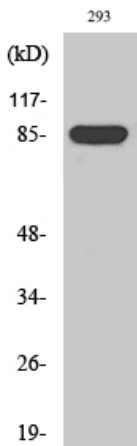
**matters needing attention**

Avoid repeated freezing and thawing!

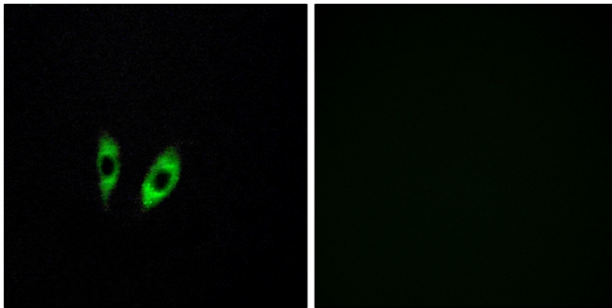
**Usage suggestions**

This product can be used in immunological reaction related experiments. For more information, please consult technical personnel.

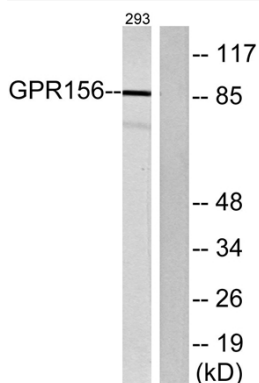
## Products Images



Western Blot analysis of various cells using GPR156 Polyclonal Antibody



Immunofluorescence analysis of HeLa cells, using GPR156 Antibody. The picture on the right is blocked with the synthesized peptide.



Western blot analysis of lysates from 293 cells, using GPR156 Antibody. The lane on the right is blocked with the synthesized peptide.

Nanjing BYabscience technology Co.,Ltd