



GPR152 Polyclonal Antibody

Catalog No	BYab-13310
Isotype	IgG
Reactivity	Human;Rat;Mouse;
Applications	WB;IF;ELISA
Gene Name	GPR152
Protein Name	Probable G-protein coupled receptor 152
Immunogen	The antiserum was produced against synthesized peptide derived from human GPR152. AA range:10-59
Specificity	GPR152 Polyclonal Antibody detects endogenous levels of GPR152 protein.
Formulation	Liquid in PBS containing 50% glycerol, 0.5% BSA and 0.02% sodium azide.
Source	Polyclonal, Rabbit,IgG
Purification	The antibody was affinity-purified from rabbit antiserum by affinity-chromatography using epitope-specific immunogen.
Dilution	Western Blot: 1/500 - 1/2000. Immunofluorescence: 1/200 - 1/1000. ELISA: 1/20000. Not yet tested in other applications.
Concentration	1 mg/ml
Purity	≥90%
Storage Stability	-20°C/1 year
Synonyms	GPR152; PGR5; Probable G-protein coupled receptor 152; G-protein coupled receptor PGR5
Observed Band	51kD
Cell Pathway	Cell membrane; Multi-pass membrane protein.
Tissue Specificity	Retina,
Function	function:Orphan receptor.,similarity:Belongs to the G-protein coupled receptor 1 family.,
Background	function:Orphan receptor.,similarity:Belongs to the G-protein coupled receptor 1 family.,
matters needing attention	Avoid repeated freezing and thawing!

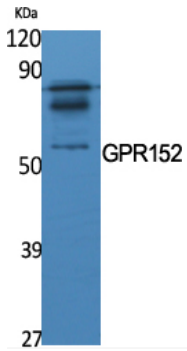
Nanjing BYabscience technology Co.,Ltd



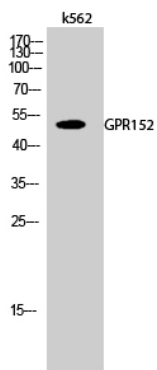
Usage suggestions

This product can be used in immunological reaction related experiments. For more information, please consult technical personnel.

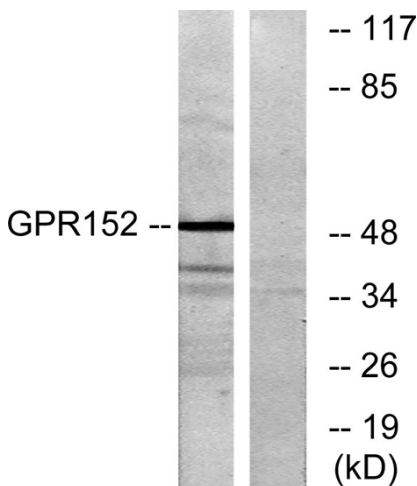
Products Images



Western Blot analysis of various cells using GPR152 Polyclonal Antibody



Western Blot analysis of k562 cells using GPR152 Polyclonal Antibody



Western blot analysis of lysates from Jurkat cells, using GPR152 Antibody. The lane on the right is blocked with the synthesized peptide.