



GPR146 Polyclonal Antibody

Catalog No	BYab-13304
Isotype	IgG
Reactivity	Human;Rat;Mouse;
Applications	WB;IF;ELISA
Gene Name	GPR146
Protein Name	Probable G-protein coupled receptor 146
Immunogen	The antiserum was produced against synthesized peptide derived from human GPR146. AA range:191-240
Specificity	GPR146 Polyclonal Antibody detects endogenous levels of GPR146 protein.
Formulation	Liquid in PBS containing 50% glycerol, 0.5% BSA and 0.02% sodium azide.
Source	Polyclonal, Rabbit,IgG
Purification	The antibody was affinity-purified from rabbit antiserum by affinity-chromatography using epitope-specific immunogen.
Dilution	Western Blot: 1/500 - 1/2000. Immunofluorescence: 1/200 - 1/1000. ELISA: 1/5000. Not yet tested in other applications.
Concentration	1 mg/ml
Purity	≥90%
Storage Stability	-20°C/1 year
Synonyms	GPR146; PGR8; Probable G-protein coupled receptor 146; G-protein coupled receptor PGR8
Observed Band	30kD
Cell Pathway	Cell membrane; Multi-pass membrane protein.
Tissue Specificity	Kidney,Lung,
Function	function:Orphan receptor.,similarity:Belongs to the G-protein coupled receptor 1 family.,
Background	function:Orphan receptor.,similarity:Belongs to the G-protein coupled receptor 1 family.,
matters needing attention	Avoid repeated freezing and thawing!

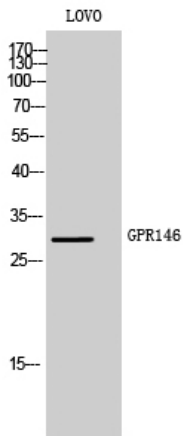
Nanjing BYabscience technology Co.,Ltd



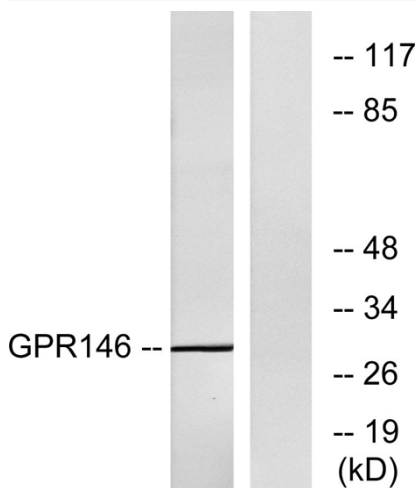
Usage suggestions

This product can be used in immunological reaction related experiments. For more information, please consult technical personnel.

Products Images



Western Blot analysis of LOVO cells using GPR146 Polyclonal Antibody



Western blot analysis of lysates from LOVO cells, using GPR146 Antibody. The lane on the right is blocked with the synthesized peptide.