



GPR144 Polyclonal Antibody

Catalog No	BYab-13303
Isotype	IgG
Reactivity	Human;Rat;Mouse;
Applications	WB;IF;ELISA
Gene Name	GPR144
Protein Name	Probable G-protein coupled receptor 144
Immunogen	The antiserum was produced against synthesized peptide derived from human GPR144. AA range:91-140
Specificity	GPR144 Polyclonal Antibody detects endogenous levels of GPR144 protein.
Formulation	Liquid in PBS containing 50% glycerol, 0.5% BSA and 0.02% sodium azide.
Source	Polyclonal, Rabbit,IgG
Purification	The antibody was affinity-purified from rabbit antiserum by affinity-chromatography using epitope-specific immunogen.
Dilution	Western Blot: 1/500 - 1/2000. Immunofluorescence: 1/200 - 1/1000. ELISA: 1/5000. Not yet tested in other applications.
Concentration	1 mg/ml
Purity	≥90%
Storage Stability	-20°C/1 year
Synonyms	GPR144; PGR24; Probable G-protein coupled receptor 144; G-protein coupled receptor PGR24
Observed Band	104kD
Cell Pathway	Membrane ; Multi-pass membrane protein .
Tissue Specificity	
Function	function:Orphan receptor.,similarity:Belongs to the G-protein coupled receptor 2 family. LN-TM7 subfamily.,similarity:Contains 1 GPS domain.,similarity:Contains 1 pentaxin domain.,
Background	function:Orphan receptor.,similarity:Belongs to the G-protein coupled receptor 2 family. LN-TM7 subfamily.,similarity:Contains 1 GPS domain.,similarity:Contains 1 pentaxin domain.,
matters needing attention	Avoid repeated freezing and thawing!

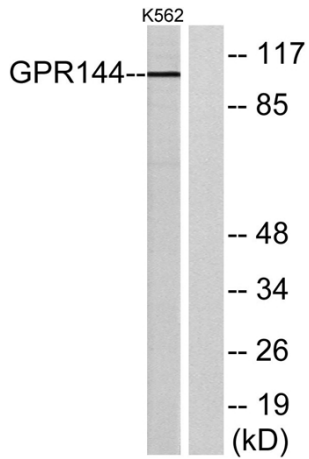
Nanjing BYabscience technology Co.,Ltd



Usage suggestions

This product can be used in immunological reaction related experiments. For more information, please consult technical personnel.

Products Images



Western blot analysis of lysates from K562 cells, using GPR144 Antibody. The lane on the right is blocked with the synthesized peptide.