



GPR137C Polyclonal Antibody

Catalog No	BYab-13299
Isotype	IgG
Reactivity	Human;Rat;Mouse;
Applications	WB;IHC;IF;ELISA
Gene Name	GPR137C
Protein Name	Integral membrane protein GPR137C
Immunogen	The antiserum was produced against synthesized peptide derived from human GPR137C. AA range:256-305
Specificity	GPR137C Polyclonal Antibody detects endogenous levels of GPR137C protein.
Formulation	Liquid in PBS containing 50% glycerol, 0.5% BSA and 0.02% sodium azide.
Source	Polyclonal, Rabbit,IgG
Purification	The antibody was affinity-purified from rabbit antiserum by affinity-chromatography using epitope-specific immunogen.
Dilution	Western Blot: 1/500 - 1/2000. Immunohistochemistry: 1/100 - 1/300. Immunofluorescence: 1/200 - 1/1000. ELISA: 1/10000. Not yet tested in other applications.
Concentration	1 mg/ml
Purity	≥90%
Storage Stability	-20°C/1 year
Synonyms	GPR137C; TM7SF1L2; Integral membrane protein GPR137C; Transmembrane 7 superfamily member 1-like 2 protein
Observed Band	45kD
Cell Pathway	Lysosome membrane ; Multi-pass membrane protein .
Tissue Specificity	Melanoma,Small intestine,
Function	similarity:Belongs to the GPR137 family.,
Background	similarity:Belongs to the GPR137 family.,
matters needing attention	Avoid repeated freezing and thawing!

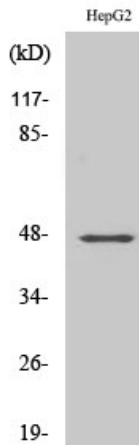
Nanjing BYabscience technology Co.,Ltd



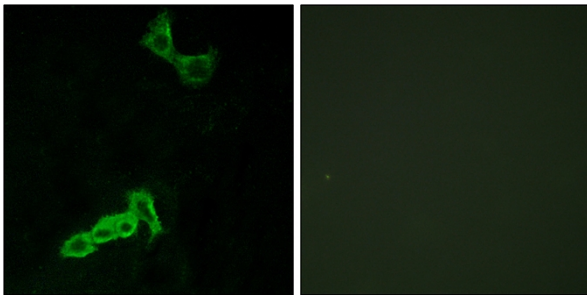
Usage suggestions

This product can be used in immunological reaction related experiments. For more information, please consult technical personnel.

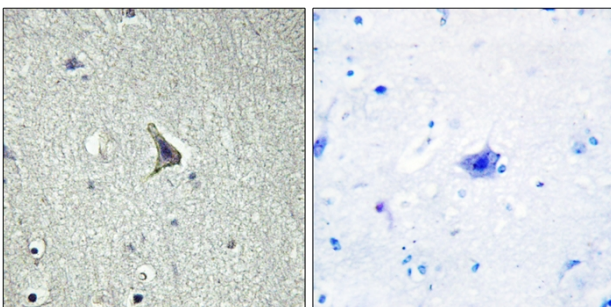
Products Images



Western Blot analysis of various cells using GPR137C Polyclonal Antibody

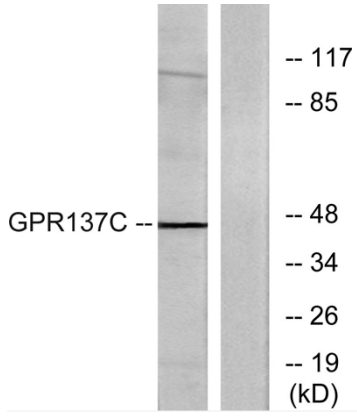


Immunofluorescence analysis of MCF7 cells, using GPR137C Antibody. The picture on the right is blocked with the synthesized peptide.



Immunohistochemistry analysis of paraffin-embedded human brain tissue, using GPR137C Antibody. The picture on the right is blocked with the synthesized peptide.

Nanjing BYabscience technology Co.,Ltd



Western blot analysis of lysates from HepG2 cells, using GPR137C Antibody. The lane on the right is blocked with the synthesized peptide.