



# GPR120 Polyclonal Antibody

<b>Catalog No</b>	BYab-13292
<b>Isotype</b>	IgG
<b>Reactivity</b>	Human;Mouse;Rat
<b>Applications</b>	WB;IF;ELISA
<b>Gene Name</b>	O3FAR1
<b>Protein Name</b>	Omega-3 fatty acid receptor 1
<b>Immunogen</b>	The antiserum was produced against synthesized peptide derived from human GPR120. AA range:221-270
<b>Specificity</b>	GPR120 Polyclonal Antibody detects endogenous levels of GPR120 protein.
<b>Formulation</b>	Liquid in PBS containing 50% glycerol, 0.5% BSA and 0.02% sodium azide.
<b>Source</b>	Polyclonal, Rabbit,IgG
<b>Purification</b>	The antibody was affinity-purified from rabbit antiserum by affinity-chromatography using epitope-specific immunogen.
<b>Dilution</b>	Western Blot: 1/500 - 1/2000. Immunofluorescence: 1/200 - 1/1000. ELISA: 1/5000. Not yet tested in other applications.
<b>Concentration</b>	1 mg/ml
<b>Purity</b>	≥90%
<b>Storage Stability</b>	-20°C/1 year
<b>Synonyms</b>	O3FAR1; GPR120; GPR129; PGR4; Omega-3 fatty acid receptor 1; G-protein coupled receptor 120; G-protein coupled receptor 129; G-protein coupled receptor GT01; G-protein coupled receptor PGR4
<b>Observed Band</b>	38kD
<b>Cell Pathway</b>	[Isoform 1]: Cell membrane ; Multi-pass membrane protein . Endosome membrane ; Multi-pass membrane protein . Lysosome membrane ; Multi-pass membrane protein . Sorted to late endosome/lysosome compartments upon internalization. ; [Isoform 2]: Cell membrane ; Multi-pass membrane protein . Endosome membrane ; Multi-pass membrane protein . Lysosome membrane ; Multi-pass membrane protein . Cell projection, cilium membrane ; Multi-pass membrane protein . Sorted to late endosome/lysosome compartments upon internalization (PubMed:22282525). Specifically localizes to the primary cilium of undifferentiated adipocytes. Ciliary trafficking is TULP3-dependent. As the cilium is lost during adipogenesis, moves to the plasma membrane (Probable). .
<b>Tissue Specificity</b>	[Isoform 2]: The predominant isoform in human tissues. Expressed in adipose tissue, pancreatic islets, lung and brain. Expressed in alpha cells of pancreatic islets (PubMed:24742677). Expressed in primary cilia of perivascular

Nanjing BYabscience technology Co.,Ltd



preadipocytes of white adipose tissue (at protein level) (PubMed:31761534). ; Abundant expression in the intestinal tract. Expressed in colonic intraepithelial neuroendocrine cells.

**Function**

function:Receptor for unsaturated long-chain free fatty acid (FAA). Binding of the ligand promotes the secretion of glucagon-like peptide-1 from the gastro-intestinal tract.,similarity:Belongs to the G-protein coupled receptor 1 family.,tissue specificity:Abundant expression in the intestinal tract.,

**Background**

This gene encodes a G protein-coupled receptor (GPR) which belongs to the rhodopsin family of GPRs. The encoded protein functions as a receptor for free fatty acids, including omega-3, and participates in suppressing anti-inflammatory responses and insulin sensitizing. Multiple transcript variants encoding different isoforms have been found for this gene. [provided by RefSeq, Feb 2012],

**matters needing attention**

Avoid repeated freezing and thawing!

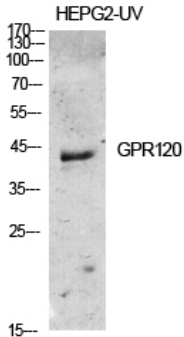
**Usage suggestions**

This product can be used in immunological reaction related experiments. For more information, please consult technical personnel.

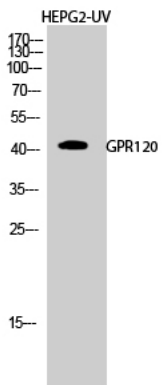
Nanjing BYabscience technology Co.,Ltd



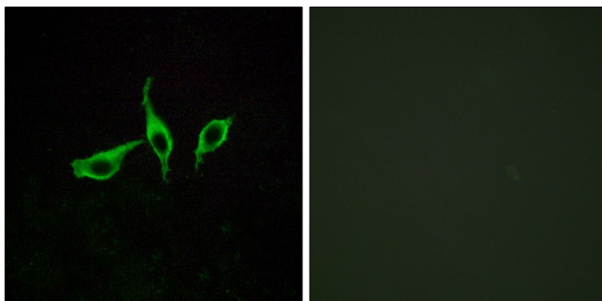
## Products Images



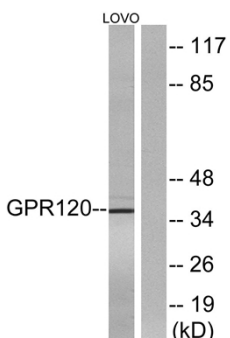
Western Blot analysis of various cells using GPR120 Polyclonal Antibody diluted at 1:500



Western Blot analysis of HEPG2-UV cells using GPR120 Polyclonal Antibody diluted at 1:500

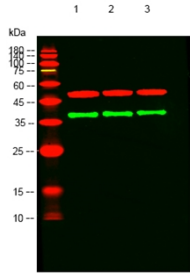


Immunofluorescence analysis of LOVO cells, using GPR120 Antibody. The picture on the right is blocked with the synthesized peptide.



Western blot analysis of lysates from LOVO cells, using GPR120 Antibody. The lane on the right is blocked with the synthesized peptide.

Nanjing BYabscience technology Co.,Ltd



Western blot analysis of lysates from 1) HEPG2-UV, 2) HEK-293T, 3) LOVO cells, (Green) primary antibody was diluted at 1:1000, 4° over night, secondary antibody (cat:RS23920) was diluted at 1:10000, 37° 1hour. (Red) Tubulin  $\beta$  Monoclonal Antibody (5G3) (cat:YM3030) antibody was diluted at 1:5000 as loading control, 4° over night, secondary antibody (cat:RS23710) was diluted at 1:10000, 37° 1hour.