



# GPR119 Polyclonal Antibody

<b>Catalog No</b>	BYab-13290
<b>Isotype</b>	IgG
<b>Reactivity</b>	Human;Rat;Mouse;
<b>Applications</b>	WB;IF;ELISA
<b>Gene Name</b>	GPR119
<b>Protein Name</b>	Glucose-dependent insulinotropic receptor
<b>Immunogen</b>	The antiserum was produced against synthesized peptide derived from human GPR119. AA range:186-235
<b>Specificity</b>	GPR119 Polyclonal Antibody detects endogenous levels of GPR119 protein.
<b>Formulation</b>	Liquid in PBS containing 50% glycerol, 0.5% BSA and 0.02% sodium azide.
<b>Source</b>	Polyclonal, Rabbit,IgG
<b>Purification</b>	The antibody was affinity-purified from rabbit antiserum by affinity-chromatography using epitope-specific immunogen.
<b>Dilution</b>	Western Blot: 1/500 - 1/2000. Immunofluorescence: 1/200 - 1/1000. ELISA: 1/10000. Not yet tested in other applications.
<b>Concentration</b>	1 mg/ml
<b>Purity</b>	≥90%
<b>Storage Stability</b>	-20°C/1 year
<b>Synonyms</b>	GPR119; Glucose-dependent insulinotropic receptor; G-protein coupled receptor 119
<b>Observed Band</b>	37kD
<b>Cell Pathway</b>	Cell membrane; Multi-pass membrane protein.
<b>Tissue Specificity</b>	Predominantly expressed in the pancreas, especially in the islets.
<b>Function</b>	function:Receptor for the endogenous fatty-acid ethanolamide oleoylethanolamide (OEA) and lysophosphatidylcholine (LPC). Functions as a glucose-dependent insulinotropic receptor. The activity of this receptor is mediated by G proteins which activate adenylate cyclase. Seems to act through a G(s) mediated pathway.,similarity:Belongs to the G-protein coupled receptor 1 family.,tissue specificity:Predominantly expressed in the pancreas, especially in the islets.,
<b>Background</b>	This gene encodes a member of the rhodopsin subfamily of G-protein-coupled receptors that is expressed in the pancreas and gastrointestinal tract. The

Nanjing BYabscience technology Co.,Ltd



encoded protein is activated by lipid amides including lysophosphatidylcholine and oleoylethanolamide and may be involved in glucose homeostasis. This protein is a potential drug target in the treatment of type 2 diabetes.[provided by RefSeq, Jan 2010],

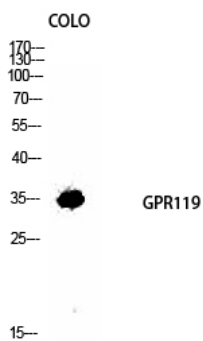
**matters needing attention**

Avoid repeated freezing and thawing!

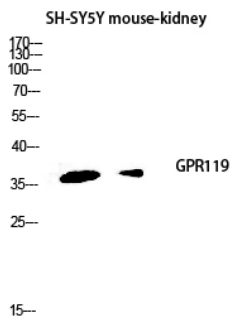
**Usage suggestions**

This product can be used in immunological reaction related experiments. For more information, please consult technical personnel.

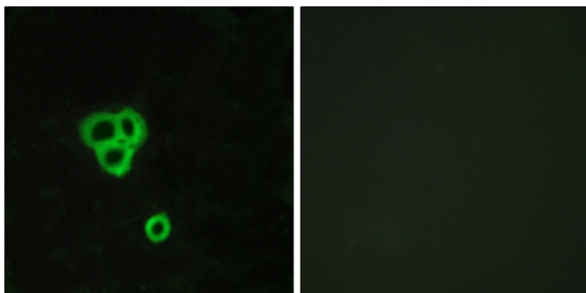
## Products Images



Western Blot analysis of COLO cells using GPR119 Polyclonal Antibody diluted at 1:1000



Western blot analysis of SH-SY5Y mouse-kidney lysis using GPR119 antibody. Antibody was diluted at 1:1000



Immunofluorescence analysis of MCF7 cells, using GPR119 Antibody. The picture on the right is blocked with the synthesized peptide.

Nanjing BYabscience technology Co.,Ltd

