



GPR107 Polyclonal Antibody

Catalog No	BYab-13283
Isotype	IgG
Reactivity	Human;Rat;Mouse;
Applications	WB;IHC;IF;ELISA
Gene Name	GPR107
Protein Name	Protein GPR107
Immunogen	The antiserum was produced against synthesized peptide derived from human GPR107. AA range:141-190
Specificity	GPR107 Polyclonal Antibody detects endogenous levels of GPR107 protein.
Formulation	Liquid in PBS containing 50% glycerol, 0.5% BSA and 0.02% sodium azide.
Source	Polyclonal, Rabbit,IgG
Purification	The antibody was affinity-purified from rabbit antiserum by affinity-chromatography using epitope-specific immunogen.
Dilution	Western Blot: 1/500 - 1/2000. Immunohistochemistry: 1/100 - 1/300. Immunofluorescence: 1/200 - 1/1000. ELISA: 1/5000. Not yet tested in other applications.
Concentration	1 mg/ml
Purity	≥90%
Storage Stability	-20°C/1 year
Synonyms	GPR107; KIAA1624; LUSTR1; Protein GPR107; Lung seven transmembrane receptor 1
Observed Band	67kD
Cell Pathway	Cell membrane ; Multi-pass membrane protein . Golgi apparatus, trans-Golgi network membrane .
Tissue Specificity	Brain,Gastric cancer,Lymph node,Small intestine,
Function	similarity:Belongs to the LU7TM family.,
Background	similarity:Belongs to the LU7TM family.,
matters needing attention	Avoid repeated freezing and thawing!

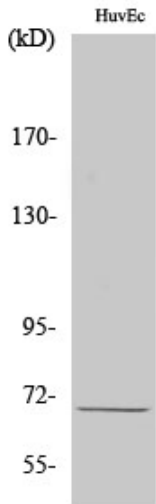
Nanjing BYabscience technology Co.,Ltd



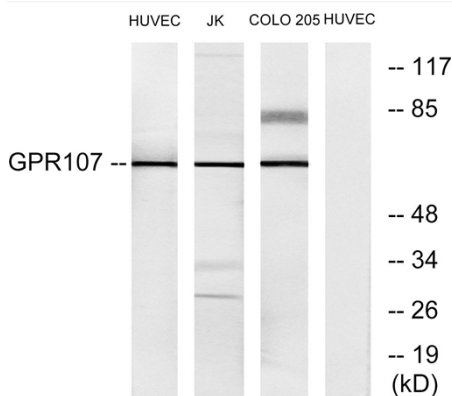
Usage suggestions

This product can be used in immunological reaction related experiments. For more information, please consult technical personnel.

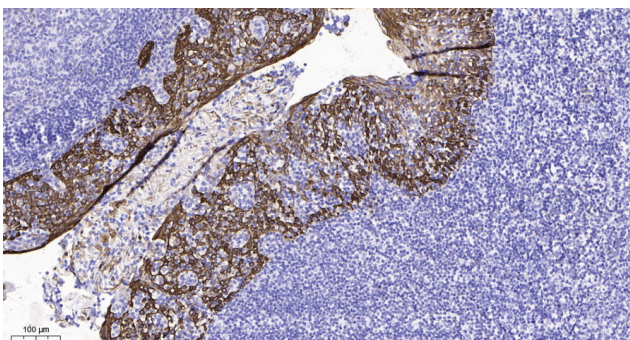
Products Images



Western Blot analysis of various cells using GPR107 Polyclonal Antibody



Western blot analysis of lysates from HUVEC, Jurkat, and COLO205 cells, using GPR107 Antibody. The lane on the right is blocked with the synthesized peptide.



Immunohistochemical analysis of paraffin-embedded human tonsil. 1, Antibody was diluted at 1:200(4° overnight). 2, Tris-EDTA,pH9.0 was used for antigen retrieval. 3,Secondary antibody was diluted at 1:200(room temperature, 45min).