



GPR10 Polyclonal Antibody

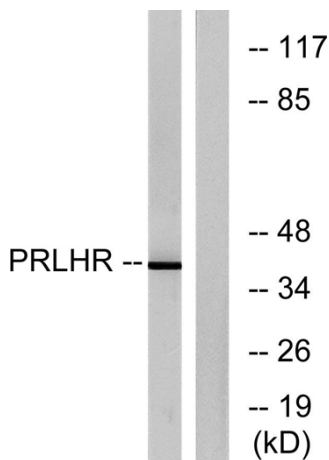
Catalog No	BYab-13278
Isotype	IgG
Reactivity	Human;Mouse;Rat
Applications	WB;IF;ELISA
Gene Name	PRLHR
Protein Name	Prolactin-releasing peptide receptor
Immunogen	The antiserum was produced against synthesized peptide derived from human PRLHR. AA range:184-233
Specificity	GPR10 Polyclonal Antibody detects endogenous levels of GPR10 protein.
Formulation	Liquid in PBS containing 50% glycerol, 0.5% BSA and 0.02% sodium azide.
Source	Polyclonal, Rabbit,IgG
Purification	The antibody was affinity-purified from rabbit antiserum by affinity-chromatography using epitope-specific immunogen.
Dilution	Western Blot: 1/500 - 1/2000. Immunofluorescence: 1/200 - 1/1000. ELISA: 1/20000. Not yet tested in other applications.
Concentration	1 mg/ml
Purity	≥90%
Storage Stability	-20°C/1 year
Synonyms	PRLHR; GPR10; GR3; Prolactin-releasing peptide receptor; PrRP receptor; PrRPR; G-protein coupled receptor 10; hGR3
Observed Band	41kD
Cell Pathway	Cell membrane; Multi-pass membrane protein.
Tissue Specificity	Only detected in the pituitary gland and in all cell types of pituitary adenomas.
Function	function:Receptor for prolactin-releasing peptide (PrRP). Implicated in lactation, regulation of food intake and pain-signal processing.,induction:Repressed by bromocriptine, a dopamine agonist.,similarity:Belongs to the G-protein coupled receptor 1 family.,subunit:Interacts through its C-terminal region with the PDZ domain-containing proteins GRIP1, GRIP2 and PICK1. Interacts with PDZ domains 4 and 5 of GRIP1 and with the PDZ domain of PICK1.,tissue specificity:Only detected in the pituitary gland and in all cell types of pituitary adenomas.,

Nanjing BYabscience technology Co.,Ltd



Background	PRLHR is a 7-transmembrane domain receptor for prolactin-releasing hormone (PRLH; MIM 602663) that is highly expressed in anterior pituitary (Ozawa et al., 2002 [PubMed 11923475]).[supplied by OMIM, Mar 2008],
matters needing attention	Avoid repeated freezing and thawing!
Usage suggestions	This product can be used in immunological reaction related experiments. For more information, please consult technical personnel.

Products Images



Western blot analysis of lysates from Jurkat cells, using PRLHR Antibody. The lane on the right is blocked with the synthesized peptide.