



Glucagon Receptor Polyclonal Antibody

Catalog No	BYab-13275
Isotype	IgG
Reactivity	Human;Mouse;Rat
Applications	WB;IF;ELISA
Gene Name	GCGR
Protein Name	Glucagon receptor
Immunogen	The antiserum was produced against synthesized peptide derived from human GLR. AA range:95-144
Specificity	Glucagon Receptor Polyclonal Antibody detects endogenous levels of Glucagon Receptor protein.
Formulation	Liquid in PBS containing 50% glycerol, 0.5% BSA and 0.02% sodium azide.
Source	Polyclonal, Rabbit,IgG
Purification	The antibody was affinity-purified from rabbit antiserum by affinity-chromatography using epitope-specific immunogen.
Dilution	Western Blot: 1/500 - 1/2000. Immunofluorescence: 1/200 - 1/1000. ELISA: 1/5000. Not yet tested in other applications.
Concentration	1 mg/ml
Purity	≥90%
Storage Stability	-20°C/1 year
Synonyms	GCGR; Glucagon receptor; GL-R
Observed Band	54kD
Cell Pathway	Cell membrane ; Multi-pass membrane protein . Is rapidly internalized after ligand-binding. .
Tissue Specificity	Liver,Placenta,
Function	disease:It is a candidate for certain defects in non-insulin-dependent diabetes mellitus (NIDDM). The variant in position 40 (Ser) is found in some NIDDM patients, but also in nondiabetic subjects.,function:This is a receptor for glucagon which plays a central role in regulating the level of blood glucose by controlling the rate of hepatic glucose production and insulin secretion. The activity of this receptor is mediated by G proteins which activate adenylyl cyclase and also a phosphatidylinositol-calcium second messenger system.,similarity:Belongs to the G-protein coupled receptor 2 family.,
Background	glucagon receptor(GCGR) Homo sapiens The protein encoded by this gene is a glucagon receptor that is important in controlling blood glucose levels. Defects in

Nanjing BYabscience technology Co.,Ltd



this gene are a cause of non-insulin-dependent diabetes mellitus (NIDDM).[provided by RefSeq, Jan 2010],

matters needing attention

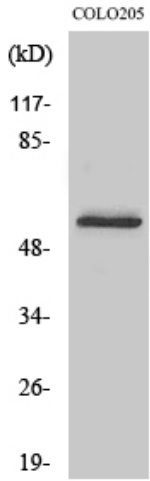
Avoid repeated freezing and thawing!

Usage suggestions

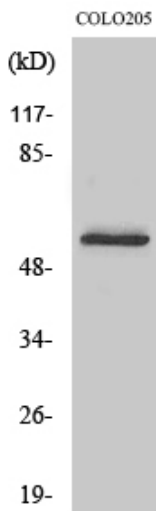
This product can be used in immunological reaction related experiments. For more information, please consult technical personnel.



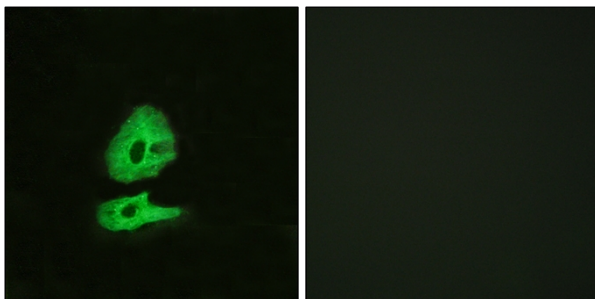
Products Images



Western Blot analysis of various cells using Glucagon Receptor Polyclonal Antibody



Western Blot analysis of COLO205 cells using Glucagon Receptor Polyclonal Antibody



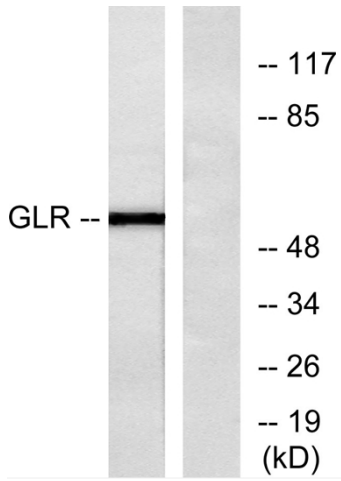
Immunofluorescence analysis of HeLa cells, using GLR Antibody. The picture on the right is blocked with the synthesized peptide.

Nanjing BYabscience technology Co.,Ltd

网址: www.njbybio.com

官方热线: 025-5229-8998

监督电话: 15950492658



Western blot analysis of lysates from COLO205 cells, using GLR Antibody. The lane on the right is blocked with the synthesized peptide.