



# Frizzled-3 Polyclonal Antibody

|                           |  |
|---------------------------|--|
| <b>Catalog No</b>         | BYab-13256   |
| <b>Isotype</b>            | IgG  |
| <b>Reactivity</b>         | Human;Mouse  |
| <b>Applications</b>       | WB;IF;ELISA  |
| <b>Gene Name</b>          | FZD3   |
| <b>Protein Name</b>       | Frizzled-3   |
| <b>Immunogen</b>          | The antiserum was produced against synthesized peptide derived from human FZD3. AA range:141-190   |
| <b>Specificity</b>        | Frizzled-3 Polyclonal Antibody detects endogenous levels of Frizzled-3 protein.  |
| <b>Formulation</b>        | Liquid in PBS containing 50% glycerol, 0.5% BSA and 0.02% sodium azide.  |
| <b>Source</b>             | Polyclonal, Rabbit,IgG   |
| <b>Purification</b>       | The antibody was affinity-purified from rabbit antiserum by affinity-chromatography using epitope-specific immunogen.  |
| <b>Dilution</b>           | Western Blot: 1/500 - 1/2000. Immunofluorescence: 1/200 - 1/1000. ELISA: 1/10000. Not yet tested in other applications.  |
| <b>Concentration</b>      | 1 mg/ml  |
| <b>Purity</b>             | ≥90%   |
| <b>Storage Stability</b>  | -20°C/1 year   |
| <b>Synonyms</b>           | FZD3; Frizzled-3; Fz-3; hFz3   |
| <b>Observed Band</b>      | 76kD   |
| <b>Cell Pathway</b>       | Membrane; Multi-pass membrane protein. Cell membrane ; Multi-pass membrane protein . Cell surface . Apical cell membrane ; Multi-pass membrane protein. Colocalizes with FZD6 at the apical face of the cell (By similarity). .  |
| <b>Tissue Specificity</b> | Widely expressed. Relatively high expression in the CNS, including regions of the limbic system, in kidney, pancreas, skeletal muscle, uterus and testis.  |
| <b>Function</b>           | domain:Lys-Thr-X-X-X-Trp motif is involved in the activation of the Wnt/beta-catenin signaling pathway.,domain:The FZ domain is involved in binding with Wnt ligands.,function:Receptor for Wnt proteins. Most of frizzled receptors are coupled to the beta-catenin canonical signaling pathway, which leads to the activation of disheveled proteins, inhibition of GSK-3 kinase, nuclear accumulation of beta-catenin and activation of Wnt target genes. A second signaling pathway involving PKC and calcium fluxes has been seen for some family members, but it is not yet clear if it represents a distinct pathway or if it can be integrated in the canonical pathway, as PKC seems to be required for |

Nanjing BYabscience technology Co.,Ltd



Wnt-mediated inactivation of GSK-3 kinase. Both pathways seem to involve interactions with G-proteins. May be involved in transduction and intercellular transmission of polarity information during tissue morphog

**Background**

frizzled class receptor 3(FZD3) Homo sapiens This gene is a member of the frizzled gene family. Members of this family encode seven-transmembrane domain proteins that are receptors for the wingless type MMTV integration site family of signaling proteins. Most frizzled receptors are coupled to the beta-catenin canonical signaling pathway. The function of this protein is unknown, although it may play a role in mammalian hair follicle development. Alternative splicing results in multiple transcript variants. This gene is a susceptibility locus for schizophrenia. [provided by RefSeq, Dec 2010],

**matters needing attention**

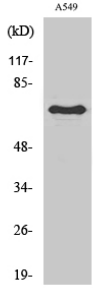
Avoid repeated freezing and thawing!

**Usage suggestions**

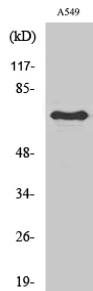
This product can be used in immunological reaction related experiments. For more information, please consult technical personnel.



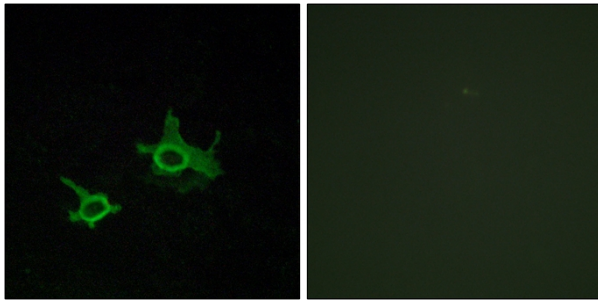
## Products Images



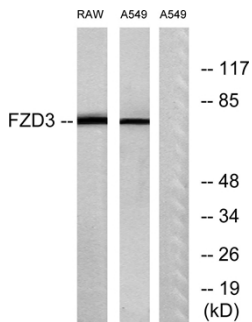
Western Blot analysis of various cells using Frizzled-3 Polyclonal Antibody



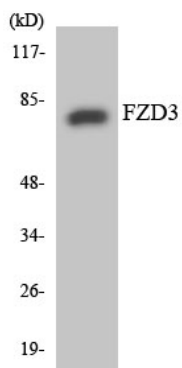
Western Blot analysis of RAW264.7 cells using Frizzled-3 Polyclonal Antibody



Immunofluorescence analysis of COS7 cells, using FZD3 Antibody. The picture on the right is blocked with the synthesized peptide.



Western blot analysis of lysates from A549 and RAW264.7 cells, using FZD3 Antibody. The lane on the right is blocked with the synthesized peptide.



Western blot analysis of the lysates from HeLa cells using FZD3 antibody.

Nanjing BYabscience technology Co.,Ltd