



# CKR-2 Polyclonal Antibody

<b>Catalog No</b>	BYab-13179
<b>Isotype</b>	IgG
<b>Reactivity</b>	Mouse;Rat
<b>Applications</b>	WB;IF;ELISA
<b>Gene Name</b>	CCR2
<b>Protein Name</b>	C-C chemokine receptor type 2
<b>Immunogen</b>	Synthesized peptide derived from CKR-2 . at AA range: 250-330
<b>Specificity</b>	CKR-2 Polyclonal Antibody detects endogenous levels of CKR-2 protein.
<b>Formulation</b>	Liquid in PBS containing 50% glycerol, 0.5% BSA and 0.02% sodium azide.
<b>Source</b>	Polyclonal, Rabbit,IgG
<b>Purification</b>	The antibody was affinity-purified from rabbit antiserum by affinity-chromatography using epitope-specific immunogen.
<b>Dilution</b>	Western Blot: 1/500 - 1/2000. Immunofluorescence: 1/200 - 1/1000. ELISA: 1/5000. Not yet tested in other applications.
<b>Concentration</b>	1 mg/ml
<b>Purity</b>	≥90%
<b>Storage Stability</b>	-20°C/1 year
<b>Synonyms</b>	CCR2; CMKBR2; C-C chemokine receptor type 2; C-C CKR-2; CC-CKR-2; CCR-2; CCR2; Monocyte chemoattractant protein 1 receptor; MCP-1-R; CD antigen CD192
<b>Observed Band</b>	46kD
<b>Cell Pathway</b>	
<b>Tissue Specificity</b>	
<b>Function</b>	
<b>Background</b>	CCR2 (C-C Motif Chemokine Receptor 2) is a Protein Coding gene. Diseases associated with CCR2 include idiopathic anterior uveitis and cd3zeta deficiency. Among its related pathways are Signaling by GPCR and A-beta Pathways: uptake and Degradation. GO annotations related to this gene include G-protein coupled receptor activity and chemokine receptor activity. An important paralog of this gene is CCR9. eceptor for the CCL2, CCL7 and CCL13 chemokines. Transduces a signal by increasing intracellular calcium ion levels. Alternative coreceptor with

Nanjing BYabscience technology Co.,Ltd



CD4 for HIV-1 infection. hemokine CC receptors (CCRs) predominantly recognize CC chemokines. CC chemokines are distinguished by having four conserved cysteines, with the first two cysteines being adjacent to each other. There are 10 chemokine CC receptors.

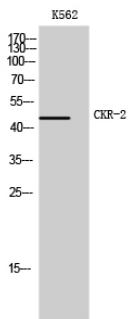
**matters needing attention**

Avoid repeated freezing and thawing!

**Usage suggestions**

This product can be used in immunological reaction related experiments. For more information, please consult technical personnel.

## Products Images



Western Blot analysis of K562 cells using CKR-2 Polyclonal Antibody