



# AR- $\beta$ 3 Polyclonal Antibody

<b>Catalog No</b>	BYab-13152
<b>Isotype</b>	IgG
<b>Reactivity</b>	Human;Mouse;Rat
<b>Applications</b>	WB IF;ELISA
<b>Gene Name</b>	ADRB3
<b>Protein Name</b>	Beta-3 adrenergic receptor
<b>Immunogen</b>	The antiserum was produced against synthesized peptide derived from human ADRB3. AA range:250-299
<b>Specificity</b>	AR- $\beta$ 3 Polyclonal Antibody detects endogenous levels of AR- $\beta$ 3 protein.
<b>Formulation</b>	Liquid in PBS containing 50% glycerol, 0.5% BSA and 0.02% sodium azide.
<b>Source</b>	Polyclonal, Rabbit,IgG
<b>Purification</b>	The antibody was affinity-purified from rabbit antiserum by affinity-chromatography using epitope-specific immunogen.
<b>Dilution</b>	WB 1:500-2000 IF 1:100-300 ELISA 1:5000-20000 Not yet tested in other applications.
<b>Concentration</b>	1 mg/ml
<b>Purity</b>	$\geq$ 90%
<b>Storage Stability</b>	-20°C/1 year
<b>Synonyms</b>	ADRB3; ADRB3R; B3AR; Beta-3 adrenergic receptor; Beta-3 adrenoreceptor; Beta-3 adrenoceptor
<b>Observed Band</b>	36kD
<b>Cell Pathway</b>	Cell membrane; Multi-pass membrane protein.
<b>Tissue Specificity</b>	Expressed mainly in adipose tissues.
<b>Function</b>	function:Beta-adrenergic receptors mediate the catecholamine-induced activation of adenylate cyclase through the action of G proteins. Beta-3 is involved in the regulation of lipolysis and thermogenesis.,polymorphism:The variant Arg-64 seems to be associated with weight gain (obesity) and to is also associated with susceptibility to non-insulin-dependent diabetes mellitus (NIDDM).,similarity:Belongs to the G-protein coupled receptor 1 family.,tissue specificity:Expressed mainly in adipose tissues.,
<b>Background</b>	The protein encoded by this gene belongs to the family of beta adrenergic receptors, which mediate catecholamine-induced activation of adenylate cyclase

Nanjing BYabscience technology Co.,Ltd



through the action of G proteins. This receptor is located mainly in the adipose tissue and is involved in the regulation of lipolysis and thermogenesis. [provided by RefSeq, Feb 2009],

**matters needing attention**

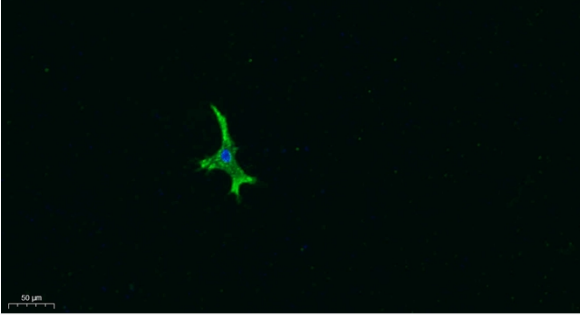
Avoid repeated freezing and thawing!

**Usage suggestions**

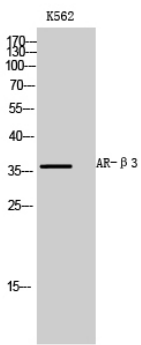
This product can be used in immunological reaction related experiments. For more information, please consult technical personnel.



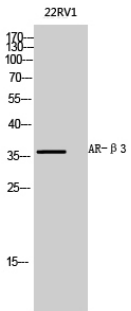
## Products Images



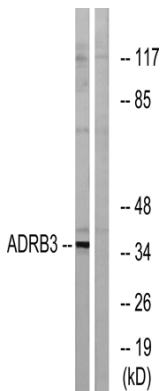
Immunofluorescence analysis of A549. 1, primary Antibody was diluted at 1:200(4°C overnight). 2, Goat Anti Rabbit IgG (H&L) - Alexa Fluor 488 Secondary antibody was diluted at 1:1000(room temperature, 50min).3, Picture B: DAPI(blue) 10min.



Western Blot analysis of K562 cells using AR-β3 Polyclonal Antibody diluted at 1:1000



Western Blot analysis of 22RV1 cells using AR-β3 Polyclonal Antibody diluted at 1:1000



Western blot analysis of lysates from K562 cells, using ADRB3 Antibody. The lane on the right is blocked with the synthesized peptide.