



# AR- $\alpha$ 1B Polyclonal Antibody

<b>Catalog No</b>	BYab-13147
<b>Isotype</b>	IgG
<b>Reactivity</b>	Human;Mouse;Rat
<b>Applications</b>	WB;IF;ELISA
<b>Gene Name</b>	ADRA1B
<b>Protein Name</b>	Alpha-1B adrenergic receptor
<b>Immunogen</b>	The antiserum was produced against synthesized peptide derived from human ADRA1B. AA range:431-480
<b>Specificity</b>	AR- $\alpha$ 1B Polyclonal Antibody detects endogenous levels of AR- $\alpha$ 1B protein.
<b>Formulation</b>	Liquid in PBS containing 50% glycerol, 0.5% BSA and 0.02% sodium azide.
<b>Source</b>	Polyclonal, Rabbit,IgG
<b>Purification</b>	The antibody was affinity-purified from rabbit antiserum by affinity-chromatography using epitope-specific immunogen.
<b>Dilution</b>	Western Blot: 1/500 - 1/2000. Immunofluorescence: 1/200 - 1/1000. ELISA: 1/20000. Not yet tested in other applications.
<b>Concentration</b>	1 mg/ml
<b>Purity</b>	$\geq$ 90%
<b>Storage Stability</b>	-20°C/1 year
<b>Synonyms</b>	ADRA1B; Alpha-1B adrenergic receptor; Alpha-1B adrenoreceptor; Alpha-1B adrenoceptor
<b>Observed Band</b>	60kD
<b>Cell Pathway</b>	Nucleus membrane; Multi-pass membrane protein. Cell membrane ; Multi-pass membrane protein . Cytoplasm . Membrane, caveola . Location at the nuclear membrane facilitates heterooligomerization and regulates ERK-mediated signaling in cardiac myocytes. signaling in cardiac myocytes. Colocalizes with GNAQ, PLCB1 as well as LAP2 at the nuclear membrane of cardiac myocytes.
<b>Tissue Specificity</b>	Brain,
<b>Function</b>	function:This alpha-adrenergic receptor mediates its action by association with G proteins that activate a phosphatidylinositol-calcium second messenger system.,similarity:Belongs to the G-protein coupled receptor 1 family.,
<b>Background</b>	Alpha-1-adrenergic receptors (alpha-1-ARs) are members of the G protein-coupled receptor superfamily. They activate mitogenic responses and regulate growth and proliferation of many cells. There are 3 alpha-1-AR subtypes:

**Nanjing BYabscience technology Co.,Ltd**



alpha-1A, -1B and -1D, all of which signal through the Gq/11 family of G-proteins and different subtypes show different patterns of activation. This gene encodes alpha-1B-adrenergic receptor, which induces neoplastic transformation when transfected into NIH 3T3 fibroblasts and other cell lines. Thus, this normal cellular gene is identified as a protooncogene. This gene comprises 2 exons and a single large intron of at least 20 kb that interrupts the coding region. [provided by RefSeq, Jul 2008],

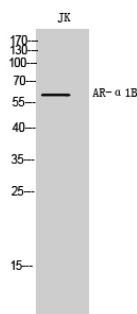
**matters needing attention**

Avoid repeated freezing and thawing!

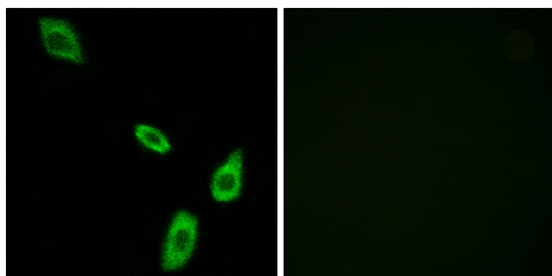
**Usage suggestions**

This product can be used in immunological reaction related experiments. For more information, please consult technical personnel.

## Products Images



Western Blot analysis of JK cells using AR- $\alpha$ 1B Polyclonal Antibody



Immunofluorescence analysis of LOVO cells, using ADRA1B Antibody. The picture on the right is blocked with the synthesized peptide.