



ApoER2 Polyclonal Antibody

Catalog No	BYab-13141
Isotype	IgG
Reactivity	Human;Rat;Mouse;
Applications	WB;ELISA
Gene Name	LRP8
Protein Name	Low-density lipoprotein receptor-related protein 8
Immunogen	The antiserum was produced against synthesized peptide derived from human LRP8. AA range:451-500
Specificity	ApoER2 Polyclonal Antibody detects endogenous levels of ApoER2 protein.
Formulation	Liquid in PBS containing 50% glycerol, 0.5% BSA and 0.02% sodium azide.
Source	Polyclonal, Rabbit,IgG
Purification	The antibody was affinity-purified from rabbit antiserum by affinity-chromatography using epitope-specific immunogen.
Dilution	Western Blot: 1/500 - 1/2000. ELISA: 1/40000. Not yet tested in other applications.
Concentration	1 mg/ml
Purity	≥90%
Storage Stability	-20°C/1 year
Synonyms	LRP8; APOER2; Low-density lipoprotein receptor-related protein 8; LRP-8; Apolipoprotein E receptor 2
Observed Band	100kD
Cell Pathway	Cell membrane ; Single-pass type I membrane protein . Secreted . Isoforms that contain the exon coding for a furin-type cleavage site are proteolytically processed, leading to a secreted receptor fragment. .
Tissue Specificity	Expressed mainly in brain and placenta. Also expressed in platelets and megakaryocytic cells. Not expressed in the liver.
Function	alternative products:Additional isoforms seem to exist. No differences were observed in the pattern splicing between control and Alzheimer brains,disease:Genetic variation in LRP8 is associated with susceptibility to myocardial infarction type 1 [MIM:608446]. Atherosclerotic coronary artery disease (CAD) and myocardial infarction (MI) are complex traits that account for the leading cause of death in the Western world heart disease.,domain:The cytoplasmic domain is involved in the binding of DAB1 and in the recruitment of JNK-interacting proteins. Isoforms, which lack part of the cytoplasmic domain, are unable to recruit members of the family of JNK interacting proteins (JIP) to the

Nanjing BYabscience technology Co.,Ltd



cytoplasmic tail.,function:Cell surface receptor for Reelin (RELN) and apolipoprotein E (apoE)-containing ligands. LRP8 participates in transmitting the extracellular Reelin signal to intracellular signaling p

Background

This gene encodes a member of the low density lipoprotein receptor (LDLR) family. Low density lipoprotein receptors are cell surface proteins that play roles in both signal transduction and receptor-mediated endocytosis of specific ligands for lysosomal degradation. The encoded protein plays a critical role in the migration of neurons during development by mediating Reelin signaling, and also functions as a receptor for the cholesterol transport protein apolipoprotein E. Expression of this gene may be a marker for major depressive disorder. Alternatively spliced transcript variants encoding multiple isoforms have been observed for this gene. [provided by RefSeq, Jun 2011],

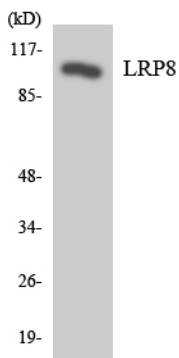
matters needing attention

Avoid repeated freezing and thawing!

Usage suggestions

This product can be used in immunological reaction related experiments. For more information, please consult technical personnel.

Products Images



Western blot analysis of the lysates from HeLa cells using LRP8 antibody.