



# Adenosine A1-R Polyclonal Antibody

<b>Catalog No</b>	BYab-13136
<b>Isotype</b>	IgG
<b>Reactivity</b>	Human;Rat
<b>Applications</b>	WB;IF;ELISA
<b>Gene Name</b>	ADORA1
<b>Protein Name</b>	Adenosine receptor A1
<b>Immunogen</b>	The antiserum was produced against synthesized peptide derived from human ADORA1. AA range:277-326
<b>Specificity</b>	Adenosine A1-R Polyclonal Antibody detects endogenous levels of Adenosine A1-R protein.
<b>Formulation</b>	Liquid in PBS containing 50% glycerol, 0.5% BSA and 0.02% sodium azide.
<b>Source</b>	Polyclonal, Rabbit,IgG
<b>Purification</b>	The antibody was affinity-purified from rabbit antiserum by affinity-chromatography using epitope-specific immunogen.
<b>Dilution</b>	Western Blot: 1/500 - 1/2000. Immunofluorescence: 1/200 - 1/1000. ELISA: 1/20000. Not yet tested in other applications.
<b>Concentration</b>	1 mg/ml
<b>Purity</b>	≥90%
<b>Storage Stability</b>	-20°C/1 year
<b>Synonyms</b>	ADORA1; Adenosine receptor A1
<b>Observed Band</b>	37kD
<b>Cell Pathway</b>	Cell membrane ; Multi-pass membrane protein.
<b>Tissue Specificity</b>	Brain,Heart,Hippocampus,
<b>Function</b>	function:Receptor for adenosine. The activity of this receptor is mediated by G proteins which inhibit adenylyl cyclase.,similarity:Belongs to the G-protein coupled receptor 1 family.,
<b>Background</b>	The protein encoded by this gene is an adenosine receptor that belongs to the G-protein coupled receptor 1 family. There are 3 types of adenosine receptors, each with a specific pattern of ligand binding and tissue distribution, and together they regulate a diverse set of physiologic functions. The type A1 receptors inhibit adenylyl cyclase, and play a role in the fertilization process. Animal studies also suggest a role for A1 receptors in kidney function and ethanol intoxication. Transcript variants with alternative splicing in the 5' UTR have been found

Nanjing BYabscience technology Co.,Ltd



for this gene. [provided by RefSeq, Jul 2008],

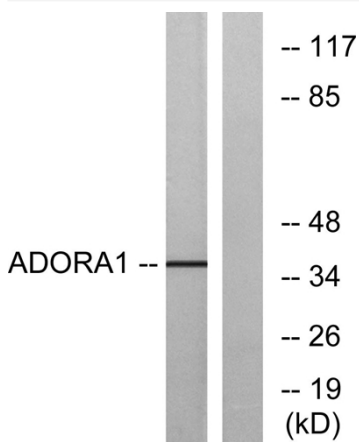
**matters needing attention**

Avoid repeated freezing and thawing!

**Usage suggestions**

This product can be used in immunological reaction related experiments. For more information, please consult technical personnel.

## Products Images



Western blot analysis of lysates from MCF-7 cells, using ADORA1 Antibody. The lane on the right is blocked with the synthesized peptide.