



EPHA7 (Phospho Tyr608) rabbit pAb

Catalog No	BYab-13131
Isotype	IgG
Reactivity	Human;Mouse;Rat
Applications	WB; ELISA
Gene Name	EPHA7 EHK3 HEK11
Protein Name	EPHA7 (Phospho Tyr608)
Immunogen	Synthesized peptide derived from human EPHA7 (Phospho Tyr608)
Specificity	This antibody detects endogenous levels of Human,Mouse,Rat EPHA7 (Phospho Tyr608)
Formulation	Liquid in PBS containing 50% glycerol, 0.5% BSA and 0.02% sodium azide.
Source	Polyclonal, Rabbit,IgG
Purification	The antibody was affinity-purified from rabbit serum by affinity-chromatography using specific immunogen.
Dilution	WB 1:1000-2000 ELISA 1:5000-20000
Concentration	1 mg/ml
Purity	≥90%
Storage Stability	-20°C/1 year
Synonyms	Ephrin type-A receptor 7 (EC 2.7.10.1;EPH homology kinase 3;EHK-3;EPH-like kinase 11;EK11;hEK11)
Observed Band	112kD
Cell Pathway	Cell membrane ; Single-pass type I membrane protein .
Tissue Specificity	Widely expressed.
Function	cell morphogenesis, cell morphogenesis involved in differentiation, morphogenesis of a branching structure, protein amino acid phosphorylation, phosphorus metabolic process, phosphate metabolic process, cell motion, cell surface receptor linked signal transduction, enzyme linked receptor protein signaling pathway, transmembrane receptor protein tyrosine kinase signaling pathway, axonogenesis, axon guidance, regulation of cell death, positive regulation of cell death, phosphorylation, cell projection organization, neuron differentiation, neuron projection development,retinal ganglion cell axon guidance, cellular component morphogenesis, cell part morphogenesis, regulation of apoptosis, positive regulation of apoptosis, regulation of programmed cell death, positive regulation of

Nanjing BYabscience technology Co.,Ltd



programmed cell death, regulation of neuron apoptosis, positive regulation of neuron apoptosis, neuron developme

Background

catalytic activity:ATP + a [protein]-L-tyrosine = ADP + a [protein]-L-tyrosine phosphate.,function:Receptor for members of the ephrin-A family. Binds to ephrin-A1, -A2, -A3, -A4 and -A5.,similarity:Belongs to the protein kinase superfamily. Tyr protein kinase family. Ephrin receptor subfamily.,similarity:Contains 1 protein kinase domain.,similarity:Contains 1 SAM (sterile alpha motif) domain.,similarity:Contains 2 fibronectin type-III domains.,subunit:Interacts with PRKCABP and GRIP1.,tissue specificity:Widely expressed.,

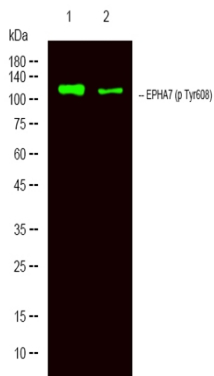
matters needing attention

Avoid repeated freezing and thawing!

Usage suggestions

This product can be used in immunological reaction related experiments. For more information, please consult technical personnel.

Products Images



Western Blot analysis of 1 Hela, 2 treated with LPS 100ng/mL 20mim,using primary antibody at 1:1000 dilution. Secondary antibody(catalog#:RS23920) was diluted at 1:10000

Nanjing BYabscience technology Co.,Ltd