



# TGFβ RIII (phospho Thr842) Polyclonal Antibody

<b>Catalog No</b>	BYab-13076
<b>Isotype</b>	IgG
<b>Reactivity</b>	Human;Mouse;Rat
<b>Applications</b>	IHC;IF;ELISA
<b>Gene Name</b>	TGFBR3
<b>Protein Name</b>	Transforming growth factor beta receptor type 3
<b>Immunogen</b>	The antiserum was produced against synthesized peptide derived from human TGF beta Receptor III around the phosphorylation site of Thr842. AA range:801-850
<b>Specificity</b>	Phospho-TGFβ RIII (T842) Polyclonal Antibody detects endogenous levels of TGFβ RIII protein only when phosphorylated at T842.
<b>Formulation</b>	Liquid in PBS containing 50% glycerol, 0.5% BSA and 0.02% sodium azide.
<b>Source</b>	Polyclonal, Rabbit,IgG
<b>Purification</b>	The antibody was affinity-purified from rabbit antiserum by affinity-chromatography using epitope-specific immunogen.
<b>Dilution</b>	Immunohistochemistry: 1/100 - 1/300. Immunofluorescence: 1/200 - 1/1000. ELISA: 1/5000. Not yet tested in other applications.
<b>Concentration</b>	1 mg/ml
<b>Purity</b>	≥90%
<b>Storage Stability</b>	-20°C/1 year
<b>Synonyms</b>	TGFBR3; Transforming growth factor beta receptor type 3; TGF-beta receptor type 3; TGFR-3; Betaglycan; Transforming growth factor beta receptor III; TGF-beta receptor type III
<b>Observed Band</b>	
<b>Cell Pathway</b>	Secreted. Secreted, extracellular space. Cell membrane ; Single-pass type I membrane protein . Exists both as a membrane-bound form and as soluble form in serum and in the extracellular matrix.
<b>Tissue Specificity</b>	Blood,Brain,Placenta,Tongue,
<b>Function</b>	function: Binds to TGF-beta. Could be involved in capturing and retaining TGF-beta for presentation to the signaling receptors.,PTM: Extensively modified by glycosaminoglycan groups (GAG).,similarity: Contains 1 ZP domain.,subcellular location: Exists both as a membrane-bound form and as soluble form in serum and in the extracellular matrix.,subunit: Interacts with TCTEX1D4.,

Nanjing BYabscience technology Co.,Ltd



**Background**

This locus encodes the transforming growth factor (TGF)-beta type III receptor. The encoded receptor is a membrane proteoglycan that often functions as a co-receptor with other TGF-beta receptor superfamily members. Ectodomain shedding produces soluble TGFBR3, which may inhibit TGFB signaling. Decreased expression of this receptor has been observed in various cancers. Alternatively spliced transcript variants encoding different isoforms have been identified for this gene.[provided by RefSeq, Sep 2010],

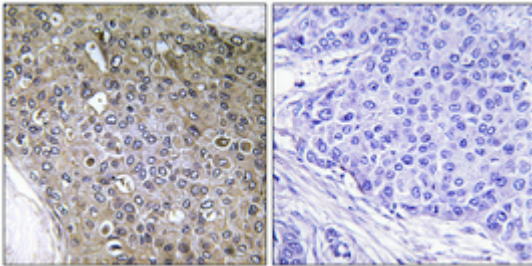
**matters needing attention**

Avoid repeated freezing and thawing!

**Usage suggestions**

This product can be used in immunological reaction related experiments. For more information, please consult technical personnel.

**Products Images**



Immunohistochemical analysis of paraffin-embedded Human breast cancer. Antibody was diluted at 1:100(4° overnight). High-pressure and temperature Tris-EDTA,pH8.0 was used for antigen retrieval. Negative contrl (right) obtained from antibody was pre-absorbed by immunogen peptide.