



IFN- α / β R α (phospho Tyr466) Polyclonal Antibody

Catalog No	BYab-13063
Isotype	IgG
Reactivity	Human;Rat;Mouse;
Applications	WB;IHC;IF;ELISA
Gene Name	IFNAR1
Protein Name	Interferon alpha/beta receptor 1
Immunogen	The antiserum was produced against synthesized peptide derived from human Interferon-alpha/beta Receptor alpha around the phosphorylation site of Tyr466. AA range:436-485
Specificity	Phospho-IFN- α / β R α (Y466) Polyclonal Antibody detects endogenous levels of IFN- α / β R α protein only when phosphorylated at Y466.
Formulation	Liquid in PBS containing 50% glycerol, 0.5% BSA and 0.02% sodium azide.
Source	Polyclonal, Rabbit,IgG
Purification	The antibody was affinity-purified from rabbit antiserum by affinity-chromatography using epitope-specific immunogen.
Dilution	WB: 1/500 - 1/2000. IHC: 1/100 - 1/300. ELISA: 1/10000.. IF 1:50-200
Concentration	1 mg/ml
Purity	$\geq 90\%$
Storage Stability	-20°C/1 year
Synonyms	IFNAR1; IFNAR; Interferon alpha/beta receptor 1; IFN-R-1; IFN-alpha/beta receptor 1; Cytokine receptor class-II member 1; Cytokine receptor family 2 member 1; CRF2-1; Type I interferon receptor 1
Observed Band	63kD
Cell Pathway	[Isoform 1]: Cell membrane ; Single-pass type I membrane protein . Late endosome . Lysosome . Interferon binding triggers internalization of the receptor from the cell membrane into endosomes and then into lysosomes. .
Tissue Specificity	IFN receptors are present in all tissues and even on the surface of most IFN-resistant cells. Isoform 1, isoform 2 and isoform 3 are expressed in the IFN-alpha sensitive myeloma cell line U266B1. Isoform 2 and isoform 3 are expressed in the IFN-alpha resistant myeloma cell line U266R. Isoform 1 is not expressed in IFN-alpha resistant myeloma cell line U266R.
Function	function:Receptor for interferons alpha and beta. Binding to type I IFNs triggers tyrosine phosphorylation of a number of proteins including JAKs, TYK2, STAT proteins and IFNR alpha- and beta-subunits themselves.,PTM:Phosphorylated on

Nanjing BYabscience technology Co.,Ltd



tyrosine residues by TYK2 tyrosine kinase.,sequence caution:Contaminating sequence. Potential poly-A sequence.,similarity:Belongs to the type II cytokine receptor family.,similarity:Contains 3 fibronectin type-III domains.,tissue specificity:IFN receptors are present in all tissues and even on the surface of most IFN-resistant cells. Isoform 1, isoform 2 and isoform 3 are expressed in the IFN-alpha sensitive myeloma cell line U266S. Isoform 2 and isoform 3 are expressed in the IFN-alpha resistant myeloma cell line U266R, isoform 1 is not expressed in U266R.,

Background

The protein encoded by this gene is a type I membrane protein that forms one of the two chains of a receptor for interferons alpha and beta. Binding and activation of the receptor stimulates Janus protein kinases, which in turn phosphorylate several proteins, including STAT1 and STAT2. The encoded protein also functions as an antiviral factor. [provided by RefSeq, Jul 2008],

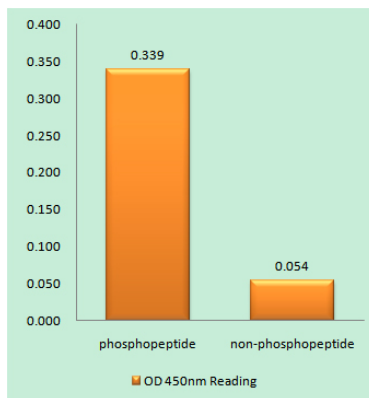
matters needing attention

Avoid repeated freezing and thawing!

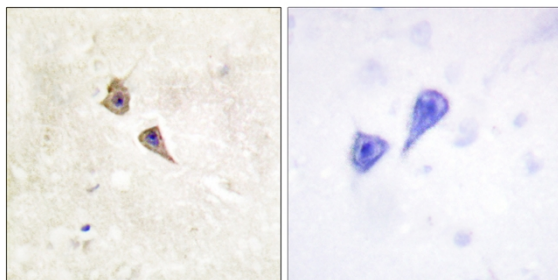
Usage suggestions

This product can be used in immunological reaction related experiments. For more information, please consult technical personnel.

Products Images



Enzyme-Linked Immunosorbent Assay (Phospho-ELISA) for Immunogen Phosphopeptide (Phospho-left) and Non-Phosphopeptide (Phospho-right), using Interferon-alpha/beta Receptor alpha (Phospho-Tyr466) Antibody



Immunohistochemistry analysis of paraffin-embedded human brain, using Interferon-alpha/beta Receptor alpha (Phospho-Tyr466) Antibody. The picture on the right is blocked with the phospho peptide.