



Tyro3 Monoclonal Antibody

| | |
|---------------------------|--|
| Catalog No | BYab-12945 |
| Isotype | IgG |
| Reactivity | Human |
| Applications | WB;IF;ELISA |
| Gene Name | TYRO3 |
| Protein Name | Tyrosine-protein kinase receptor TYRO3 |
| Immunogen | Purified recombinant fragment of Tyro3 expressed in E. Coli. |
| Specificity | Tyro3 Monoclonal Antibody detects endogenous levels of Tyro3 protein. |
| Formulation | Ascitic fluid containing 0.03% sodium azide,0.5% BSA, 50%glycerol. |
| Source | Monoclonal, Mouse |
| Purification | Affinity purification |
| Dilution | Western Blot: 1/500 - 1/2000. Immunofluorescence: 1/200 - 1/1000. ELISA: 1/10000. Not yet tested in other applications. |
| Concentration | 1 mg/ml |
| Purity | ≥90% |
| Storage Stability | -20°C/1 year |
| Synonyms | TYRO3; BYK; DTK; RSE; SKY; Tyrosine-protein kinase receptor TYRO3; Tyrosine-protein kinase DTK; Tyrosine-protein kinase RSE; Tyrosine-protein kinase SKY; Tyrosine-protein kinase byk |
| Observed Band | |
| Cell Pathway | Cell membrane; Single-pass type I membrane protein. |
| Tissue Specificity | Abundant in the brain and lower levels in other tissues. |
| Function | catalytic activity:ATP + a [protein]-L-tyrosine = ADP + a [protein]-L-tyrosine phosphate.,function:May be involved in cell adhesion processes, particularly in the central nervous system. In case of filovirus infection, seems to function as a cell entry factor.,similarity:Belongs to the protein kinase superfamily. Tyr protein kinase family.,similarity:Belongs to the protein kinase superfamily. Tyr protein kinase family. AXL/UFO subfamily.,similarity:Contains 1 protein kinase domain.,similarity:Contains 2 fibronectin type-III domains.,similarity:Contains 2 Ig-like C2-type (immunoglobulin-like) domains.,subunit:Monomer and homodimer. Interacts with GAS6.,tissue specificity:Abundant in the brain and lower levels in other tissues., |

Nanjing BYabscience technology Co.,Ltd



Background

The gene is part of a 3-member transmembrane receptor kinase receptor family with a processed pseudogene distal on chromosome 15. The encoded protein is activated by the products of the growth arrest-specific gene 6 and protein S genes and is involved in controlling cell survival and proliferation, spermatogenesis, immunoregulation and phagocytosis. The encoded protein has also been identified as a cell entry factor for Ebola and Marburg viruses. [provided by RefSeq, May 2010],

matters needing attention

Avoid repeated freezing and thawing!

Usage suggestions

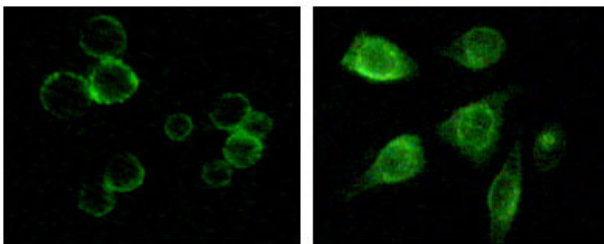
This product can be used in immunological reaction related experiments. For more information, please consult technical personnel.

Products Images

KDa 1 2



Western Blot analysis using Tyro3 Monoclonal Antibody against truncated Tyro3 recombinant protein.



Immunofluorescence staining of methanol-fixed MCF-7 and HepG2 cells showing membrane and cytoplasmic localization using Tyro3 Monoclonal Antibody.

Nanjing BYabscience technology Co.,Ltd