



EphA6 Monoclonal Antibody

Catalog No	BYab-12910
Isotype	IgG
Reactivity	Human
Applications	WB;ELISA
Gene Name	EPHA6
Protein Name	Ephrin type-A receptor 6
Immunogen	Purified recombinant fragment of EphA6 (aa695-795) expressed in E. Coli.
Specificity	EphA6 Monoclonal Antibody detects endogenous levels of EphA6 protein.
Formulation	Ascitic fluid containing 0.03% sodium azide,0.5% BSA, 50%glycerol.
Source	Monoclonal, Mouse
Purification	Affinity purification
Dilution	Western Blot: 1/500 - 1/2000. ELISA: 1/10000. Not yet tested in other applications.
Concentration	1 mg/ml
Purity	≥90%
Storage Stability	-20°C/1 year
Synonyms	EPHA6; EHK2; HEK12; Ephrin type-A receptor 6; EPH homology kinase 2; EHK-2; EPH-like kinase 12; EK12
Observed Band	
Cell Pathway	Membrane ; Single-pass type I membrane protein .
Tissue Specificity	Expressed in brain and testis.
Function	catalytic activity:ATP + a [protein]-L-tyrosine = ADP + a [protein]-L-tyrosine phosphate.,function:Receptor for members of the ephrin-A family.,similarity:Belongs to the protein kinase superfamily. Tyr protein kinase family. Ephrin receptor subfamily.,similarity:Contains 1 protein kinase domain.,similarity:Contains 1 SAM (sterile alpha motif) domain.,similarity:Contains 2 fibronectin type-III domains.,tissue specificity:Expressed in brain and testis.,
Background	catalytic activity:ATP + a [protein]-L-tyrosine = ADP + a [protein]-L-tyrosine phosphate.,function:Receptor for members of the ephrin-A family.,similarity:Belongs to the protein kinase superfamily. Tyr protein kinase family. Ephrin receptor subfamily.,similarity:Contains 1 protein kinase

Nanjing BYabscience technology Co.,Ltd



domain.,similarity:Contains 1 SAM (sterile alpha motif) domain.,similarity:Contains 2 fibronectin type-III domains.,tissue specificity:Expressed in brain and testis.,

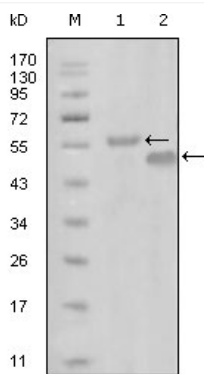
matters needing attention

Avoid repeated freezing and thawing!

Usage suggestions

This product can be used in immunological reaction related experiments. For more information, please consult technical personnel.

Products Images



Western Blot analysis using EphA6 Monoclonal Antibody against truncated MBP-EphA6 recombinant protein (1) and truncated GST-EphA6(aa695-795) recombinant protein (2).