



Cleaved-Thrombin R (S42) Polyclonal Antibody

Catalog No	BYab-12891
Isotype	IgG
Reactivity	Human;Rat;Mouse;
Applications	WB;ELISA
Gene Name	F2R
Protein Name	Proteinase-activated receptor 1
Immunogen	The antiserum was produced against synthesized peptide derived from human PAR1. AA range:23-72
Specificity	Cleaved-Thrombin R (S42) Polyclonal Antibody detects endogenous levels of fragment of activated Thrombin R protein resulting from cleavage adjacent to S42.
Formulation	Liquid in PBS containing 50% glycerol, 0.5% BSA and 0.02% sodium azide.
Source	Polyclonal, Rabbit,IgG
Purification	The antibody was affinity-purified from rabbit antiserum by affinity-chromatography using epitope-specific immunogen.
Dilution	Western Blot: 1/500 - 1/2000. ELISA: 1/20000. Not yet tested in other applications.
Concentration	1 mg/ml
Purity	≥90%
Storage Stability	-20°C/1 year
Synonyms	F2R; CF2R; PAR1; TR; Proteinase-activated receptor 1; PAR-1; Coagulation factor II receptor; Thrombin receptor
Observed Band	46kD
Cell Pathway	Cell membrane; Multi-pass membrane protein.
Tissue Specificity	Platelets and vascular endothelial cells.
Function	function:High affinity receptor for activated thrombin coupled to G proteins that stimulate phosphoinositide hydrolysis. May play a role in platelets activation and in vascular development.,PTM:A proteolytic cleavage generates a new N-terminus that functions as a tethered ligand.,PTM:Phosphorylated; probably mediating desensitization prior to the uncoupling and internalization of the receptor.,similarity:Belongs to the G-protein coupled receptor 1 family.,tissue specificity:Platelets and vascular endothelial cells.,
Background	Coagulation factor II receptor is a 7-transmembrane receptor involved in the regulation of thrombotic response. Proteolytic cleavage leads to the activation of

Nanjing BYabscience technology Co.,Ltd



the receptor. F2R is a G-protein coupled receptor family member. Alternative splicing results in multiple transcript variants. [provided by RefSeq, Aug 2015],

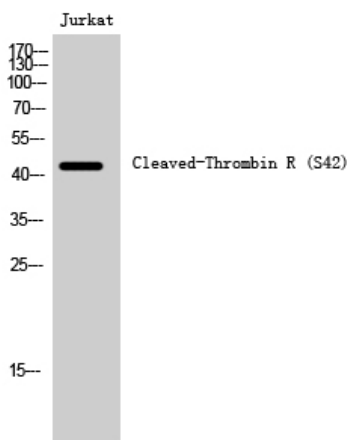
matters needing attention

Avoid repeated freezing and thawing!

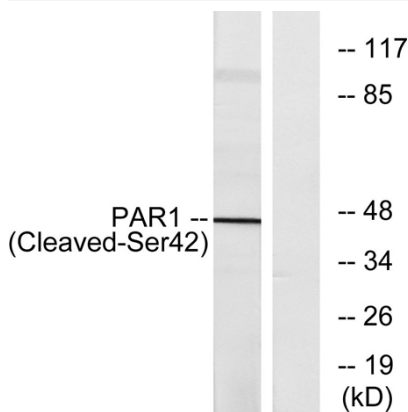
Usage suggestions

This product can be used in immunological reaction related experiments. For more information, please consult technical personnel.

Products Images



Western Blot analysis of Jurkat cells using Cleaved-Thrombin R (S42) Polyclonal Antibody



Western blot analysis of lysates from Jurkat cells, using PAR1 (Cleaved-Ser42) Antibody. The lane on the right is blocked with the synthesized peptide.

Nanjing BYabscience technology Co.,Ltd