



APP-BP2 Polyclonal Antibody

Catalog No	BYab-12868
Isotype	IgG
Reactivity	Human;Mouse;Rat
Applications	WB;ELISA
Gene Name	APPBP2
Protein Name	Amyloid protein-binding protein 2
Immunogen	Synthesized peptide derived from APP-BP2 . at AA range: 390-470
Specificity	APP-BP2 Polyclonal Antibody detects endogenous levels of APP-BP2 protein.
Formulation	Liquid in PBS containing 50% glycerol, 0.5% BSA and 0.02% sodium azide.
Source	Polyclonal, Rabbit,IgG
Purification	The antibody was affinity-purified from rabbit antiserum by affinity-chromatography using epitope-specific immunogen.
Dilution	Western Blot: 1/500 - 1/2000. ELISA: 1/10000. Not yet tested in other applications.
Concentration	1 mg/ml
Purity	≥90%
Storage Stability	-20°C/1 year
Synonyms	APPBP2; KIAA0228; PAT1; Amyloid protein-binding protein 2; Amyloid beta precursor protein-binding protein 2; APP-BP2; Protein interacting with APP tail 1
Observed Band	67kD
Cell Pathway	Nucleus . Cytoplasm, cytoskeleton . Membrane ; Peripheral membrane protein . Associated with membranes and microtubules. .
Tissue Specificity	Bone marrow,Cervix carcinoma,Skin,
Function	function:May play a role in intracellular protein transport. May be involved in the translocation of APP along microtubules toward the cell surface.,PTM:Rapidly degraded by the proteasome upon overexpression of a C-terminal fragment of APP.,similarity:Contains 8 TPR repeats.,subcellular location:Associated with membranes and microtubules.,subunit:Binds APP.,
Background	The protein encoded by this gene interacts with microtubules and is functionally associated with beta-amyloid precursor protein transport and/or processing. The beta-amyloid precursor protein is a cell surface protein with signal-transducing properties, and it is thought to play a role in the pathogenesis of Alzheimer's disease. The encoded protein may be involved in regulating

Nanjing BYabscience technology Co.,Ltd



cell death. This gene has been found to be highly expressed in breast cancer. Alternative splicing results in multiple transcript variants. [provided by RefSeq, Sep 2013],

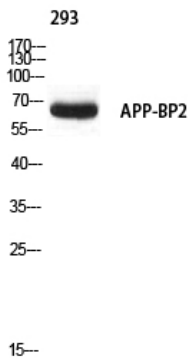
matters needing attention

Avoid repeated freezing and thawing!

Usage suggestions

This product can be used in immunological reaction related experiments. For more information, please consult technical personnel.

Products Images



Western blot analysis of 293 using APP-BP2 antibody. Secondary antibody(catalog#:RS0002) was diluted at 1:20000