



MAG Polyclonal Antibody

Catalog No	BYab-12863
Isotype	IgG
Reactivity	Human;Mouse;Rat
Applications	WB;ELISA
Gene Name	MAG
Protein Name	Myelin-associated glycoprotein
Immunogen	The antiserum was produced against synthesized peptide derived from the C-terminal region of human MAG. AA range:501-550
Specificity	MAG Polyclonal Antibody detects endogenous levels of MAG protein.
Formulation	Liquid in PBS containing 50% glycerol, 0.5% BSA and 0.02% sodium azide.
Source	Polyclonal, Rabbit,IgG
Purification	The antibody was affinity-purified from rabbit antiserum by affinity-chromatography using epitope-specific immunogen.
Dilution	Western Blot: 1/500 - 1/2000. ELISA: 1/20000. Not yet tested in other applications.
Concentration	1 mg/ml
Purity	≥90%
Storage Stability	-20°C/1 year
Synonyms	MAG; GMA; Myelin-associated glycoprotein; Siglec-4a
Observed Band	70kD
Cell Pathway	Cell membrane ; Single-pass type I membrane protein . Membrane raft .
Tissue Specificity	Both isoform 1 and isoform 2 are detected in myelinated structures in the central and peripheral nervous system, in periaxonal myelin and at Schmidt-Lanterman incisures (PubMed:9495552, PubMed:6200494). Detected in optic nerve, in oligodendroglia and in periaxonal myelin sheaths (PubMed:6200494). Detected in compact myelin (at protein level) (PubMed:6200494). Both isoform 1 and isoform 2 are detected in the central and peripheral nervous system (PubMed:9495552).
Function	function:Adhesion molecule in postnatal neural development that mediates sialic-acid dependent cell-cell interactions between neuronal and myelinating cells. Preferentially binds to alpha-2,3-linked sialic acid.,online information:Siglec-4,similarity:Belongs to the immunoglobulin superfamily. SIGLEC (sialic acid binding Ig-like lectin) family.,similarity:Contains 1 Ig-like V-type (immunoglobulin-like) domain.,similarity:Contains 4 Ig-like C2-type (immunoglobulin-like) domains.,subunit:Binds to RTN4R.,

Nanjing BYabscience technology Co.,Ltd



Background

The protein encoded by this gene is a type I membrane protein and member of the immunoglobulin superfamily. It is thought to be involved in the process of myelination. It is a lectin that binds to sialylated glycoconjugates and mediates certain myelin-neuron cell-cell interactions. Three alternatively spliced transcripts encoding different isoforms have been described for this gene. [provided by RefSeq, Nov 2010],

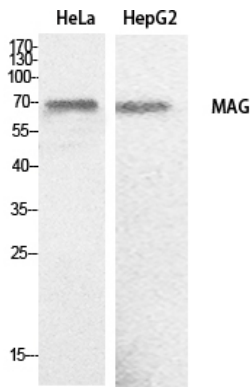
matters needing attention

Avoid repeated freezing and thawing!

Usage suggestions

This product can be used in immunological reaction related experiments. For more information, please consult technical personnel.

Products Images



Western Blot analysis of HeLa, HepG2 cells using MAG Polyclonal Antibody. Secondary antibody(catalog#:RS0002) was diluted at 1:20000