



VGF Polyclonal Antibody

Catalog No	BYab-12857
Isotype	IgG
Reactivity	Human;Mouse;Rat
Applications	WB;IHC;IF;ELISA
Gene Name	VGF
Protein Name	Neurosecretory protein VGF
Immunogen	The antiserum was produced against synthesized peptide derived from the Internal region of human VGF. AA range:451-500
Specificity	VGF Polyclonal Antibody detects endogenous levels of VGF protein.
Formulation	Liquid in PBS containing 50% glycerol, 0.5% BSA and 0.02% sodium azide.
Source	Polyclonal, Rabbit,IgG
Purification	The antibody was affinity-purified from rabbit antiserum by affinity-chromatography using epitope-specific immunogen.
Dilution	WB: 1/500 - 1/2000. IHC-p: 1/100-1/300. ELISA: 1/20000.. IF 1:50-200
Concentration	1 mg/ml
Purity	≥90%
Storage Stability	-20°C/1 year
Synonyms	VGF; Neurosecretory protein VGF
Observed Band	67kD
Cell Pathway	[Neurosecretory protein VGF]: Secreted . Cytoplasmic vesicle, secretory vesicle . Stored in secretory vesicles and then secreted, NERP peptides colocalize with vasopressin in the storage granules of hypothalamus.
Tissue Specificity	Central and peripheral nervous systems, synthesized exclusively in neuronal and neuroendocrine cells.
Function	function:May be involved in the regulation of cell-cell interactions or in synatogenesis during the maturation of the nervous system.,subcellular location:Stored in secretory vesicles and then secreted.,tissue specificity:Expressed in brain.,
Background	This gene is specifically expressed in a subpopulation of neuroendocrine cells, and is upregulated by nerve growth factor. The structural organization of this gene is similar to that of the rat gene, and both the translated and the untranslated regions show a high degree of sequence similarity to the rat gene. The encoded secretory protein also shares similarities with the secretogranin/chromogranin

Nanjing BYabscience technology Co.,Ltd



family, however, its exact function is not known. [provided by RefSeq, Jul 2008],

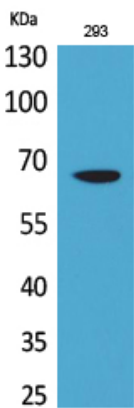
matters needing attention

Avoid repeated freezing and thawing!

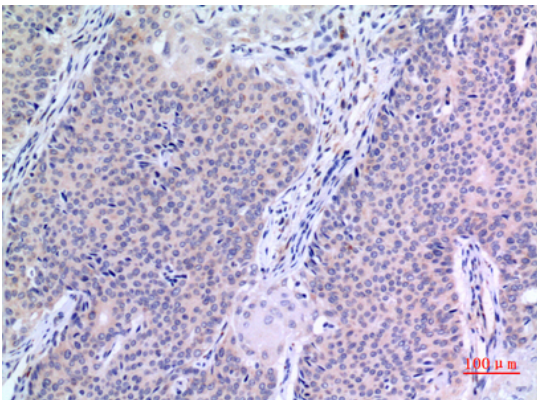
Usage suggestions

This product can be used in immunological reaction related experiments. For more information, please consult technical personnel.

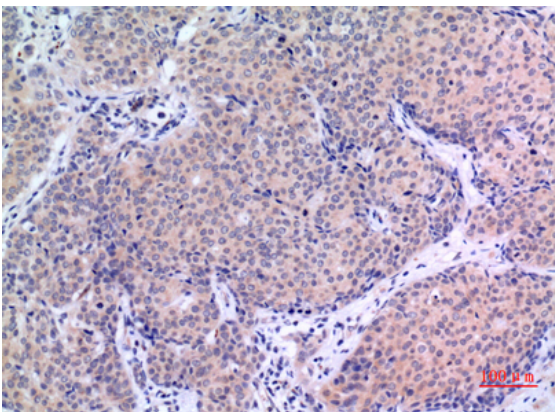
Products Images



Western Blot analysis of 293 cells using VGF Polyclonal Antibody. Secondary antibody(catalog#:RS0002) was diluted at 1:20000

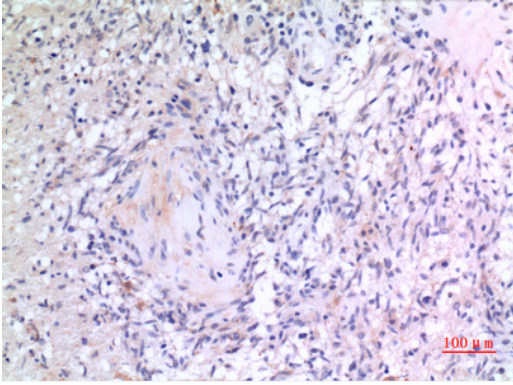


Immunohistochemical analysis of paraffin-embedded human-mammary-cancer, antibody was diluted at 1:100

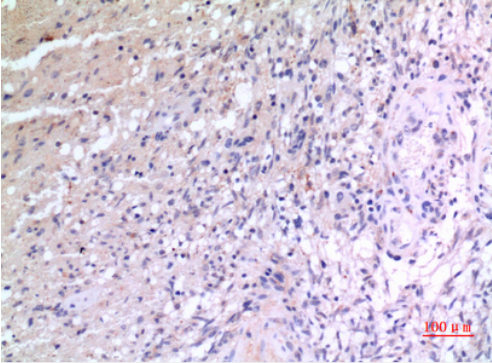


Immunohistochemical analysis of paraffin-embedded human-mammary-cancer, antibody was diluted at 1:100

Nanjing BYabscience technology Co.,Ltd



Immunohistochemical analysis of paraffin-embedded human-brain, antibody was diluted at 1:100



Immunohistochemical analysis of paraffin-embedded human-brain, antibody was diluted at 1:100