



NTT4 Polyclonal Antibody

Catalog No	BYab-12852
Isotype	IgG
Reactivity	Human;Mouse;Rat
Applications	WB;ELISA
Gene Name	SLC6A17
Protein Name	Sodium-dependent neutral amino acid transporter SLC6A17
Immunogen	Synthesized peptide derived from NTT4 . at AA range: 240-320
Specificity	NTT4 Polyclonal Antibody detects endogenous levels of NTT4 protein.
Formulation	Liquid in PBS containing 50% glycerol, 0.5% BSA and 0.02% sodium azide.
Source	Polyclonal, Rabbit,IgG
Purification	The antibody was affinity-purified from rabbit antiserum by affinity-chromatography using epitope-specific immunogen.
Dilution	Western Blot: 1/500 - 1/2000. ELISA: 1/5000. Not yet tested in other applications.
Concentration	1 mg/ml
Purity	≥90%
Storage Stability	-20°C/1 year
Synonyms	SLC6A17; NTT4; Sodium-dependent neutral amino acid transporter SLC6A17; Sodium-dependent neurotransmitter transporter NTT4; Solute carrier family 6 member 17
Observed Band	81kD
Cell Pathway	Cytoplasmic vesicle, secretory vesicle, synaptic vesicle membrane ; Multi-pass membrane protein . Cell junction, synapse, postsynapse . Cell junction, synapse, presynapse . Localizes at synaptic junctions - at both pre- and post-synaptic sites - particularly in excitatory glutamatergic terminals. .
Tissue Specificity	Hippocampus,
Function	function:Not yet known, orphan transporter.,similarity:Belongs to the sodium:neurotransmitter symporter (SNF) family.,
Background	The SLC6 family of proteins, which includes SLC6A17, acts as specific transporters for neurotransmitters, amino acids, and osmolytes like betaine, taurine, and creatine. SLC6 proteins are sodium cotransporters that derive the energy for solute transport from the electrochemical gradient for sodium ions (Hoglund et al., 2005 [PubMed 16125675]).[supplied by OMIM, Mar 2008],

Nanjing BYabscience technology Co.,Ltd



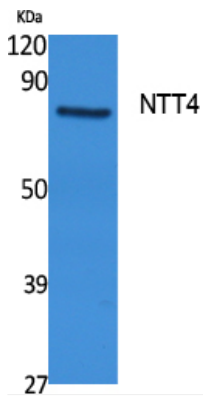
matters needing attention

Avoid repeated freezing and thawing!

Usage suggestions

This product can be used in immunological reaction related experiments. For more information, please consult technical personnel.

Products Images



Western Blot analysis of extracts from rat stomach, using NTT4 Polyclonal Antibody. Secondary antibody(catalog#:RS0002) was diluted at 1:20000