



X11 β Polyclonal Antibody

Catalog No	BYab-12843
Isotype	IgG
Reactivity	Human;Mouse;Rat
Applications	IHC;IF;WB;ELISA
Gene Name	APBA2
Protein Name	Amyloid beta A4 precursor protein-binding family A member 2
Immunogen	The antiserum was produced against synthesized peptide derived from human APBA2. AA range:371-420
Specificity	X11 β Polyclonal Antibody detects endogenous levels of X11 β protein.
Formulation	Liquid in PBS containing 50% glycerol, 0.5% BSA and 0.02% sodium azide.
Source	Polyclonal, Rabbit,IgG
Purification	The antibody was affinity-purified from rabbit antiserum by affinity-chromatography using epitope-specific immunogen.
Dilution	WB 1:500-2000 IHC: 1/100 - 1/300. ELISA: 1/20000.. IF 1:50-200
Concentration	1 mg/ml
Purity	$\geq 90\%$
Storage Stability	-20°C/1 year
Synonyms	APBA2; MINT2; X11L; Amyloid beta A4 precursor protein-binding family A member 2; Adapter protein X11beta; Neuron-specific X11L protein; Neuronal Munc18-1-interacting protein 2; Mint-2
Observed Band	83kD
Cell Pathway	plasma membrane,synaptic vesicle,
Tissue Specificity	Brain.
Function	domain:Composed of an N-terminal domain that binds STXBP1, a middle phosphotyrosine-binding domain (PID/PTB) that mediates binding with the cytoplasmic domain of the beta-amyloid precursor protein, and two C-terminal PDZ domains thought to attach proteins to the plasma membrane.,function:Putative function in synaptic vesicle exocytosis by binding to STXBP1, an essential component of the synaptic vesicle exocytotic machinery. May modulate processing of the beta-amyloid precursor protein (APP) and hence formation of beta-APP.,similarity:Contains 1 PID domain.,similarity:Contains 2 PDZ (DHR) domains.,subunit:Part of a multimeric complex containing STXBP1

Nanjing BYabscience technology Co.,Ltd



and syntaxin-1. Binds to the cytoplasmic domain of amyloid protein beta, and to the nuclear factor NF-kappa-B/p65 via its PDZ domain. Interacts with the amino-terminal domain of APBA2BP.,tissue specificity:Brain.,

Background

amyloid beta precursor protein binding family A member 2(APBA2) Homo sapiens The protein encoded by this gene is a member of the X11 protein family. It is a neuronal adapter protein that interacts with the Alzheimer's disease amyloid precursor protein (APP). It stabilizes APP and inhibits production of proteolytic APP fragments including the A beta peptide that is deposited in the brains of Alzheimer's disease patients. This gene product is believed to be involved in signal transduction processes. It is also regarded as a putative vesicular trafficking protein in the brain that can form a complex with the potential to couple synaptic vesicle exocytosis to neuronal cell adhesion. Multiple transcript variants encoding different isoforms have been found for this gene. [provided by RefSeq, Jul 2008],

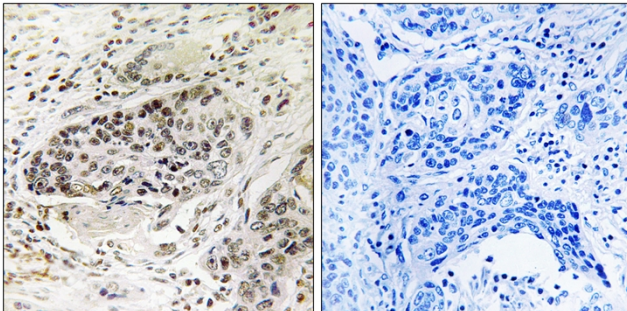
matters needing attention

Avoid repeated freezing and thawing!

Usage suggestions

This product can be used in immunological reaction related experiments. For more information, please consult technical personnel.

Products Images



Immunohistochemistry analysis of paraffin-embedded human lung carcinoma tissue, using APBA2 Antibody. The picture on the right is blocked with the synthesized peptide.