



# V1RL2 Polyclonal Antibody

<b>Catalog No</b>	BYab-12836
<b>Isotype</b>	IgG
<b>Reactivity</b>	Human;Rat;Mouse;
<b>Applications</b>	WB;IF;ELISA
<b>Gene Name</b>	VN1R2
<b>Protein Name</b>	Vomeronasal type-1 receptor 2
<b>Immunogen</b>	The antiserum was produced against synthesized peptide derived from human VN1R2. AA range:88-137
<b>Specificity</b>	V1RL2 Polyclonal Antibody detects endogenous levels of V1RL2 protein.
<b>Formulation</b>	Liquid in PBS containing 50% glycerol, 0.5% BSA and 0.02% sodium azide.
<b>Source</b>	Polyclonal, Rabbit,IgG
<b>Purification</b>	The antibody was affinity-purified from rabbit antiserum by affinity-chromatography using epitope-specific immunogen.
<b>Dilution</b>	Western Blot: 1/500 - 1/2000. Immunofluorescence: 1/200 - 1/1000. ELISA: 1/40000. Not yet tested in other applications.
<b>Concentration</b>	1 mg/ml
<b>Purity</b>	≥90%
<b>Storage Stability</b>	-20°C/1 year
<b>Synonyms</b>	VN1R2; V1RL2; Vomeronasal type-1 receptor 2; G-protein coupled receptor GPCR25; hGPCR25; V1r-like receptor 2
<b>Observed Band</b>	46kD
<b>Cell Pathway</b>	Cell membrane; Multi-pass membrane protein.
<b>Tissue Specificity</b>	
<b>Function</b>	function:Putative pheromone receptor.,miscellaneous:The chimpanzee, gorilla and orangutan orthologous proteins do not exist, their genes are pseudogenes.,online information:No one nose - Issue 61 of August 2005,similarity:Belongs to the G-protein coupled receptor 1 family.,
<b>Background</b>	function:Putative pheromone receptor.,miscellaneous:The chimpanzee, gorilla and orangutan orthologous proteins do not exist, their genes are pseudogenes.,online information:No one nose - Issue 61 of August 2005,similarity:Belongs to the G-protein coupled receptor 1 family.,

Nanjing BYabscience technology Co.,Ltd



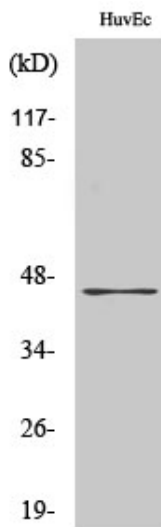
**matters needing attention**

Avoid repeated freezing and thawing!

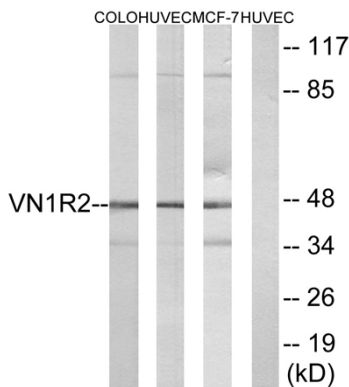
**Usage suggestions**

This product can be used in immunological reaction related experiments. For more information, please consult technical personnel.

## Products Images



Western Blot analysis of various cells using V1RL2 Polyclonal Antibody. Secondary antibody(catalog#:RS0002) was diluted at 1:20000



Western blot analysis of lysates from HUVEC, COLO, and MCF-7 cells, using VN1R2 Antibody. The lane on the right is blocked with the synthesized peptide.

Nanjing BYabscience technology Co.,Ltd