



R-2B Polyclonal AntibodyS

Catalog No	BYab-12815
Isotype	IgG
Reactivity	Human;Rat;Mouse;
Applications	WB;IF;ELISA
Gene Name	HTR2B
Protein Name	5-hydroxytryptamine receptor 2B
Immunogen	The antiserum was produced against synthesized peptide derived from human HTR2B. AA range:15-64
Specificity	SR-2B Polyclonal Antibody detects endogenous levels of SR-2B protein.
Formulation	Liquid in PBS containing 50% glycerol, 0.5% BSA and 0.02% sodium azide.
Source	Polyclonal, Rabbit,IgG
Purification	The antibody was affinity-purified from rabbit antiserum by affinity-chromatography using epitope-specific immunogen.
Dilution	Western Blot: 1/500 - 1/2000. Immunofluorescence: 1/200 - 1/1000. ELISA: 1/10000. Not yet tested in other applications.
Concentration	1 mg/ml
Purity	≥90%
Storage Stability	-20°C/1 year
Synonyms	HTR2B; 5-hydroxytryptamine receptor 2B; 5-HT-2B; 5-HT2B; Serotonin receptor 2B
Observed Band	54kD
Cell Pathway	Cell membrane ; Multi-pass membrane protein . Cell junction, synapse, synaptosome .
Tissue Specificity	Ubiquitous. Detected in liver, kidney, heart, pulmonary artery, and intestine. Detected at lower levels in blood, placenta and brain, especially in cerebellum, occipital cortex and frontal cortex.
Function	function:This is one of the several different receptors for 5-hydroxytryptamine (serotonin), a biogenic hormone that functions as a neurotransmitter, a hormone, and a mitogen. This receptor mediates its action by association with G proteins that activate a phosphatidylinositol-calcium second messenger system.,similarity:Belongs to the G-protein coupled receptor 1 family.,subunit:Interacts with MPDZ.,tissue specificity:Detected in most peripheral organs. Only low expression levels were found in the brain.,

Nanjing BYabscience technology Co.,Ltd



Background

This gene encodes one of the several different receptors for 5-hydroxytryptamine (serotonin) that belongs to the G-protein coupled receptor 1 family. Serotonin is a biogenic hormone that functions as a neurotransmitter, a hormone, and a mitogen. Serotonin receptors mediate many of the central and peripheral physiologic functions of serotonin, including regulation of cardiovascular functions and impulsive behavior. Population and family-based analyses of a minor allele (glutamine-to-stop substitution, designated Q20*) which blocks expression of this protein, and knockout studies in mice, suggest a role for this gene in impulsivity. However, other factors, such as elevated testosterone levels, may also be involved. Alternatively spliced transcript variants have been found for this gene. [provided by RefSeq, Mar 2016],

matters needing attention

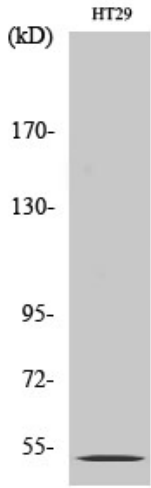
Avoid repeated freezing and thawing!

Usage suggestions

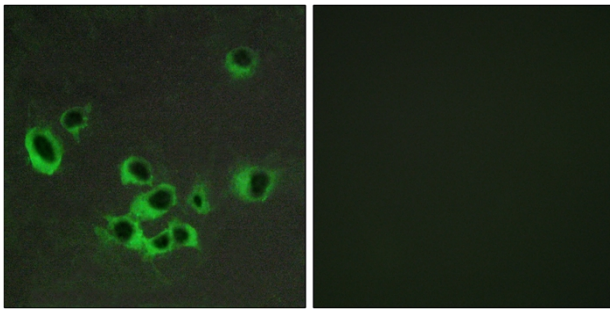
This product can be used in immunological reaction related experiments. For more information, please consult technical personnel.



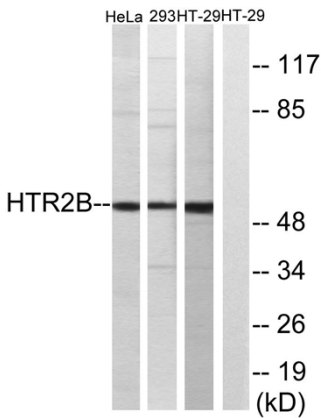
Products Images



Western Blot analysis of various cells using SR-2B Polyclonal Antibody

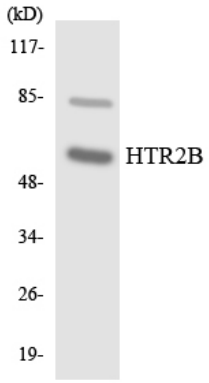


Immunofluorescence analysis of COS7 cells, using HTR2B Antibody. The picture on the right is blocked with the synthesized peptide.



Western blot analysis of lysates from HT-29, 293, and HeLa cells, using HTR2B Antibody. The lane on the right is blocked with the synthesized peptide.

Nanjing BYabscience technology Co.,Ltd



Western blot analysis of the lysates from COLO205 cells using HTR2B antibody.