



SR-1F Polyclonal Antibody

Catalog No	BYab-12813
Isotype	IgG
Reactivity	Human;Mouse;Rat;Monkey
Applications	WB;ELISA;IHC
Gene Name	HTR1F
Protein Name	5-hydroxytryptamine receptor 1F
Immunogen	The antiserum was produced against synthesized peptide derived from human 5-HT-1F. AA range:101-150
Specificity	SR-1F Polyclonal Antibody detects endogenous levels of SR-1F protein.
Formulation	Liquid in PBS containing 50% glycerol, 0.5% BSA and 0.02% sodium azide.
Source	Polyclonal, Rabbit,IgG
Purification	The antibody was affinity-purified from rabbit antiserum by affinity-chromatography using epitope-specific immunogen.
Dilution	WB 1:500-2000;IHC-p 1:50-300; ELISA 2000-20000
Concentration	1 mg/ml
Purity	≥90%
Storage Stability	-20°C/1 year
Synonyms	HTR1F; HTR1EL; 5-hydroxytryptamine receptor 1F; 5-HT-1F; 5-HT1F; Serotonin receptor 1F
Observed Band	38kD
Cell Pathway	Cell membrane ; Multi-pass membrane protein .
Tissue Specificity	Brain,
Function	function:This is one of the several different receptors for 5-hydroxytryptamine (serotonin), a biogenic hormone that functions as a neurotransmitter, a hormone, and a mitogen. The activity of this receptor is mediated by G proteins that inhibit adenylate cyclase activity.,similarity:Belongs to the G-protein coupled receptor 1 family.,
Background	function:This is one of the several different receptors for 5-hydroxytryptamine (serotonin), a biogenic hormone that functions as a neurotransmitter, a hormone, and a mitogen. The activity of this receptor is mediated by G proteins that inhibit adenylate cyclase activity.,similarity:Belongs to the G-protein coupled receptor 1 family.,

Nanjing BYabscience technology Co.,Ltd



matters needing attention

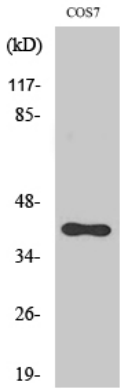
Avoid repeated freezing and thawing!

Usage suggestions

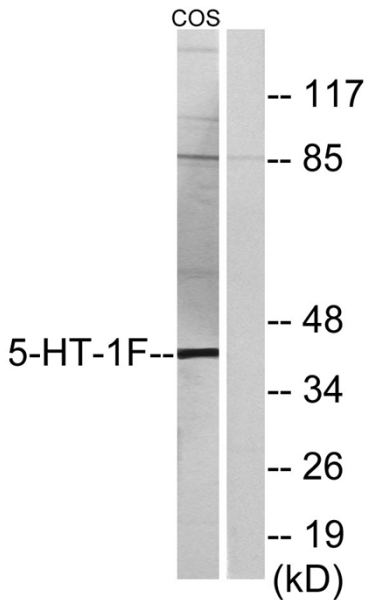
This product can be used in immunological reaction related experiments. For more information, please consult technical personnel.



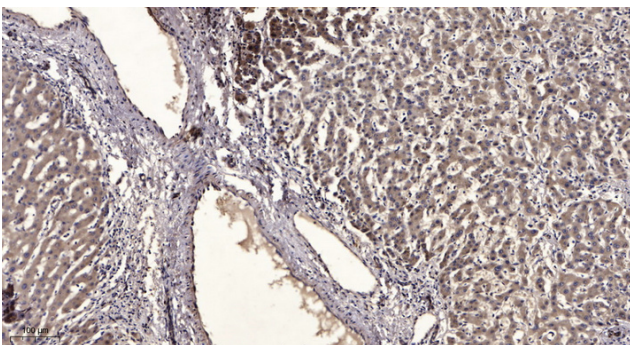
Products Images



Western Blot analysis of various cells using SR-1F Polyclonal Antibody diluted at 1:1000



Western blot analysis of lysates from COS7 cells, using 5-HT-1F Antibody. The lane on the right is blocked with the synthesized peptide.



Immunohistochemical analysis of paraffin-embedded human liver cancer. 1, Antibody was diluted at 1:200(4° overnight). 2, Tris-EDTA,pH9.0 was used for antigen retrieval. 3,Secondary antibody was diluted at 1:200(room temperature, 45min).