



SR-1B Polyclonal Antibody

Catalog No	BYab-12811
Isotype	IgG
Reactivity	Human;Mouse;Rat
Applications	WB;IHC;IF;ELISA
Gene Name	HTR1B
Protein Name	5-hydroxytryptamine receptor 1B
Immunogen	The antiserum was produced against synthesized peptide derived from human 5-HT-1B. AA range:201-250
Specificity	SR-1B Polyclonal Antibody detects endogenous levels of SR-1B protein.
Formulation	Liquid in PBS containing 50% glycerol, 0.5% BSA and 0.02% sodium azide.
Source	Polyclonal, Rabbit,IgG
Purification	The antibody was affinity-purified from rabbit antiserum by affinity-chromatography using epitope-specific immunogen.
Dilution	Western Blot: 1/500 - 1/2000. Immunohistochemistry: 1/100 - 1/300. Immunofluorescence: 1/200 - 1/1000. ELISA: 1/10000. Not yet tested in other applications.
Concentration	1 mg/ml
Purity	≥90%
Storage Stability	-20°C/1 year
Synonyms	HTR1B; HTR1DB; 5-hydroxytryptamine receptor 1B; 5-HT-1B; 5-HT1B; S12; Serotonin 1D beta receptor; 5-HT-1D-beta; Serotonin receptor 1B
Observed Band	43kD
Cell Pathway	Cell membrane ; Multi-pass membrane protein .
Tissue Specificity	Detected in cerebral artery smooth muscle cells (at protein level). Detected in brain cortex, striatum, amygdala, medulla, hippocampus, caudate nucleus and putamen.
Function	function:This is one of the several different receptors for 5-hydroxytryptamine (serotonin), a biogenic hormone that functions as a neurotransmitter, a hormone, and a mitogen. The activity of this receptor is mediated by G proteins that inhibit adenylate cyclase activity.,PTM:Palmitoylated.,PTM:Phosphorylated. Desensitization of the receptor may be mediated by its phosphorylation.,similarity:Belongs to the G-protein coupled receptor 1 family.,

Nanjing BYabscience technology Co.,Ltd



Background

The protein encoded by this intronless gene is a G-protein coupled receptor for serotonin (5-hydroxytryptamine). Ligand binding activates second messengers that inhibit the activity of adenylate cyclase and manage the release of serotonin, dopamine, and acetylcholine in the brain. The encoded protein may be involved in several neuropsychiatric disorders and therefore is often a target of antidepressant and other psychotherapeutic drugs. [provided by RefSeq, Nov 2015],

matters needing attention

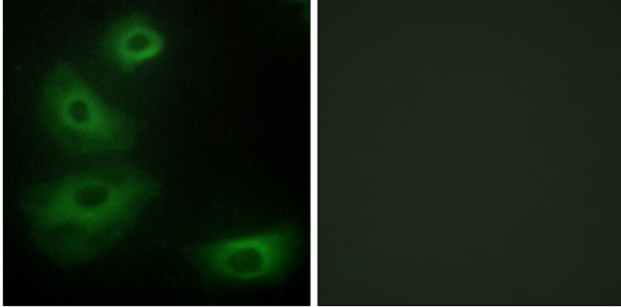
Avoid repeated freezing and thawing!

Usage suggestions

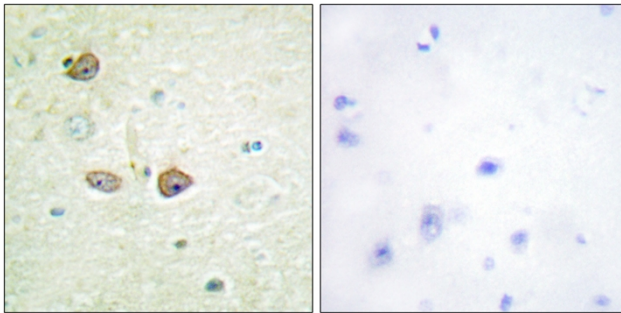
This product can be used in immunological reaction related experiments. For more information, please consult technical personnel.



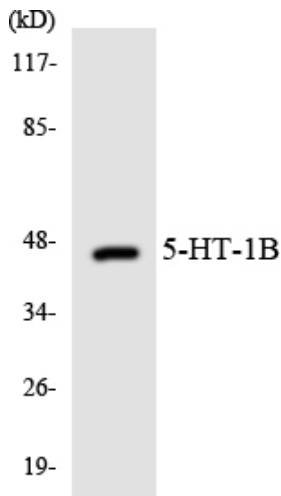
Products Images



Immunofluorescence analysis of HeLa cells, using 5-HT-1B Antibody. The picture on the right is blocked with the synthesized peptide.



Immunohistochemistry analysis of paraffin-embedded human brain tissue, using 5-HT-1B Antibody. The picture on the right is blocked with the synthesized peptide.



Western blot analysis of the lysates from HepG2 cells using 5-HT-1B antibody.